

WAAS CH 48919 W09A	APP CRS 091°	Rwy Idg TDZE 13 Apt Elev 13
--	------------------------	---

RNAV (GPS) RWY 9
FORT LAUDERDALE EXEC (FXXE)

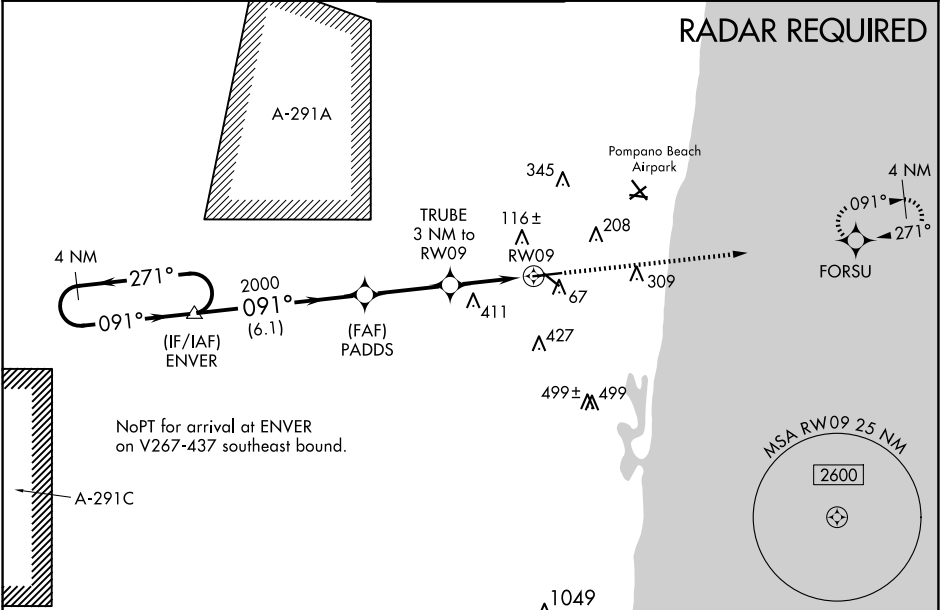
⚠ For uncompensated Baro-VNAV systems, LNAV/VNAV NA below 4°C (40°F) or above 54°C (130°F). When local altimeter setting not received, use Fort Lauderdale/Hollywood Intl altimeter setting and increase LPV DA to 231; LNAV/VNAV DA to 445. Increase all MDA 20 feet, increase LNAV/VNAV all Cats visibility to 1. Baro-VNAV and VDP NA when using Fort Lauderdale/Hollywood Intl altimeter setting. DME/DME RNP-0.3 NA.

MALS

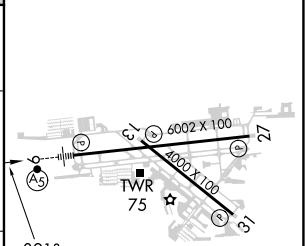
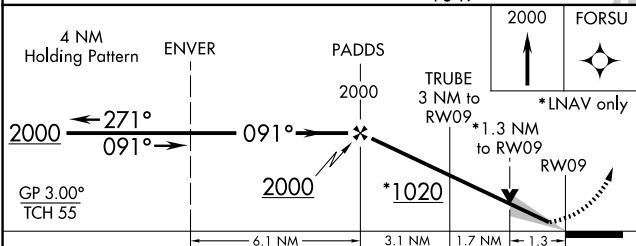
AS

MISSED APPROACH:
Climb to 2000 direct FORSU and hold.

ATIS 119.85	MIAMI APP CON 119.7 306.3	EXECUTIVE TOWER 120.9 239.3	GND CON 121.75	CLNC DEL 127.95
-----------------------	-------------------------------------	---------------------------------------	--------------------------	---------------------------



ELEV 13	TDZE 13
---------	---------



CATEGORY	A	B	C	D
LPV DA		213-½	200 (200-½)	
LNAV/VNAV DA		427-⅞	414 (500-⅞)	
LNAV MDA	480-½	467 (500-½)	480-1	467 (500-1)
CIRCLING	520-1 507 (600-1)	620-1 607 (700-1)	780-2¼ 767 (800-2¼)	780-2½ 767 (800-2½)

REIL Rwy 13, 27 and 31
HIRL Rwy 9-27
MIRL Rwy 13-31

SE-3, 10 JUL 2025 to 07 AUG 2025

SE-3, 10 JUL 2025 to 07 AUG 2025