

WAAS CH 78136 W28A	APP CRS 279°	Rwy Idg TDZE Apt Elev	3950 153 153
--	------------------------	-----------------------------	---

RNAV (GPS) RWY 28
PLANT CITY (PCM)

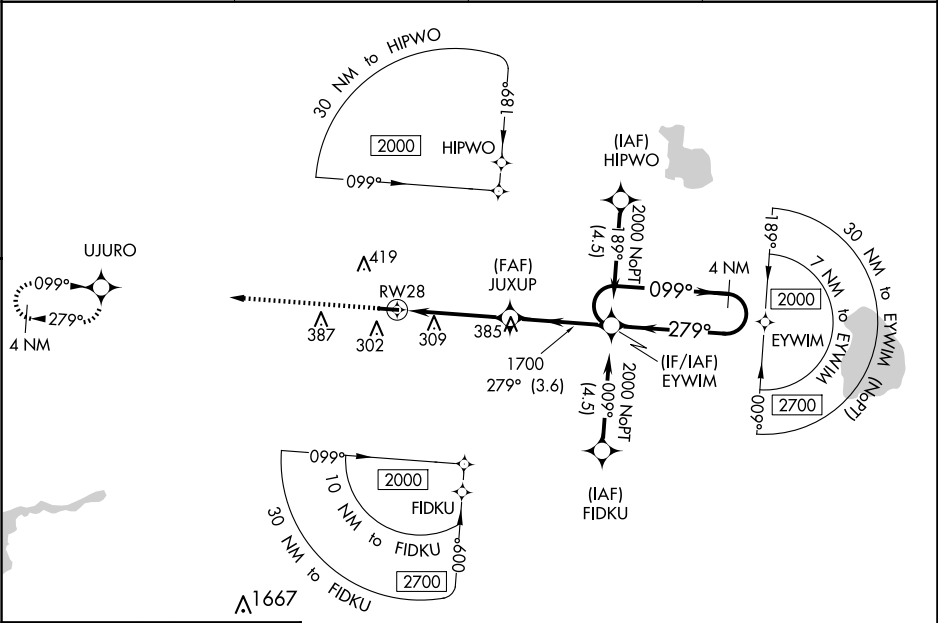
⚠

Baro-VNAV NA when using Lakeland altimeter setting. For uncompensated Baro-VNAV systems, LNAV/VNAV NA below -1.5°C (5°F) or above 54°C (130°F). DME/DME RNP-0.3 NA. Night landing: Rwy 28 NA. Helicopter visibility reduction below 1 SM NA. When local altimeter setting not received use Lakeland altimeter setting and increase all DA/MDA 20 feet.

⚠

MISSED APPROACH:
Climb to 2000 direct
UJURO and hold.

AWOS-3 120.025	TAMPA APP CON 120.65 290.3	CLNC DEL 121.725 (GCO)	UNICOM 123.05 (CTAF) 0
--------------------------	--------------------------------------	----------------------------------	----------------------------------



ELEV 153	TDZE 153
-----------------	-----------------

2000

UJURO

VGSI and RNAV glidepath not coincident
(VGSI Angle 3.00/TCH 36).

4 NM Holding Pattern

RW28

JUXUP

EYWIM

1700

1700

2000

GP 3.50°
TCH 57

CATEGORY	A	B	C	D
LPV DA	414-1	261 (300-1)	NA	
LNAV/VNAV DA	459-1	306 (400-1)	NA	
LNAV MDA	600-1	447 (500-1)	NA	
CIRCLING	680-1 527 (600-1)	720-1 567 (600-1)	NA	

MIRL Rwy 10-28 1
REIL Rws 10 and 28 1

SE-3, 10 JUL 2025 to 07 AUG 2025

SE-3, 10 JUL 2025 to 07 AUG 2025