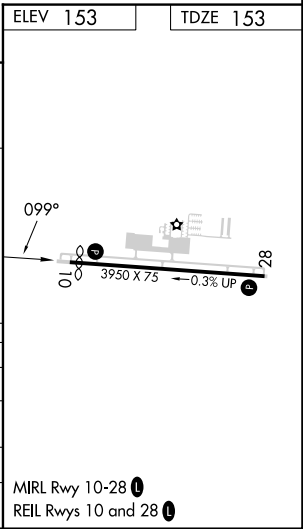
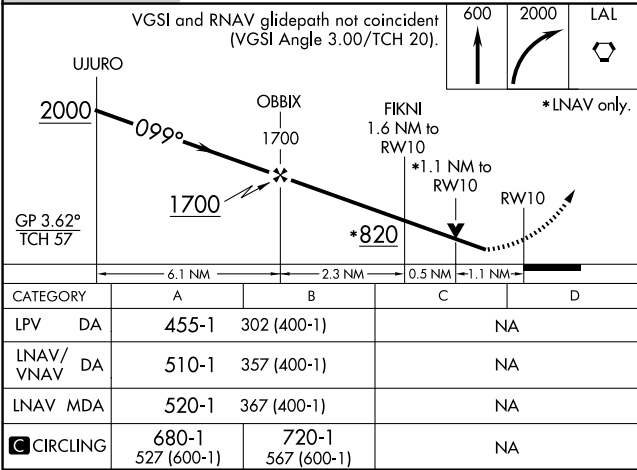
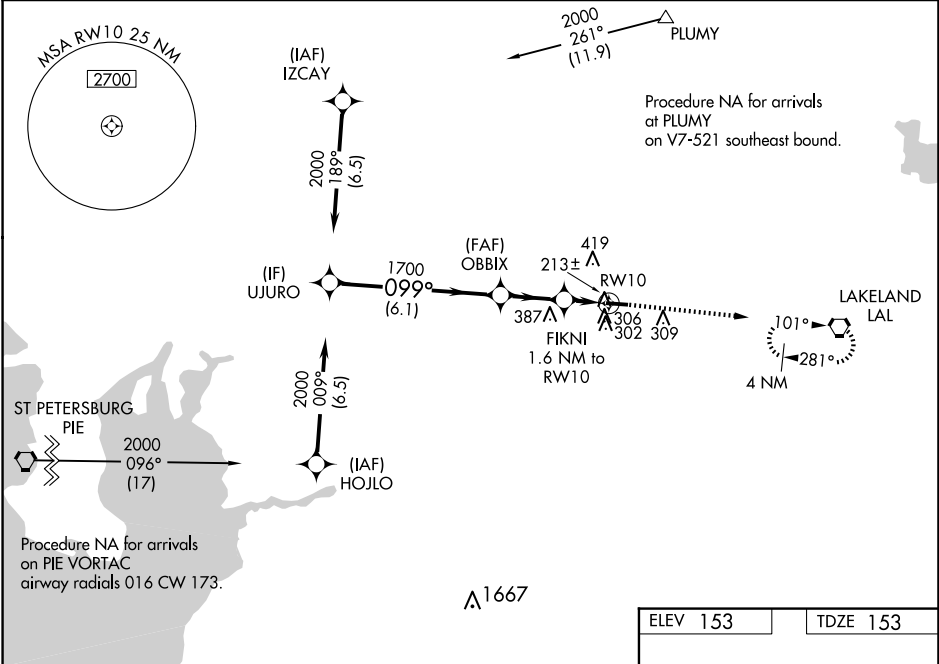


WAAS CH 90422 W10A	APP CRS 099°	Rwy Idg TDZE 153 Apt Elev 153
--	------------------------	---

RNAV (GPS) RWY 10
PLANT CITY (PCM)

RNP APCH.	Circling Rwy 28 NA at night. Baro-VNAV and VDP NA when using Lakeland altimeter setting. Rwy 10 helicopter visibility reduction below 3/4 SM NA. For uncompensated Baro-VNAV systems, LNAV/VNAV NA below -15°C or above 54°C. When local altimeter setting not received, use Lakeland altimeter setting and increase all DA/MDA 20 feet.	MISSED APPROACH: Climb to 600 then climbing right turn to 2000 direct LAL VORTAC and hold.
-----------	--	--

AWOS-3 120.025	TAMPA APP CON 120.65 290.3	CLNC DEL 121.725 (GCO)	UNICOM 123.05 (CTAF)
--------------------------	--------------------------------------	----------------------------------	--------------------------------



SE-3, 10 JUL 2025 to 07 AUG 2025

SE-3, 10 JUL 2025 to 07 AUG 2025