

WAAS CH 87036 W34A	APP CRS 335°	Rwy Idg TDZE Apt Elev	4997 83 83
--	------------------------	-----------------------------	---------------------------------------

RNAV (GPS) RWY 34

DE QUINCY INDUSTRIAL AIRPARK (5R.8)

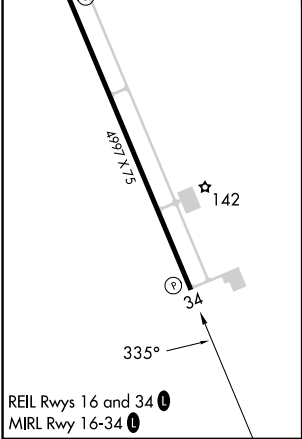
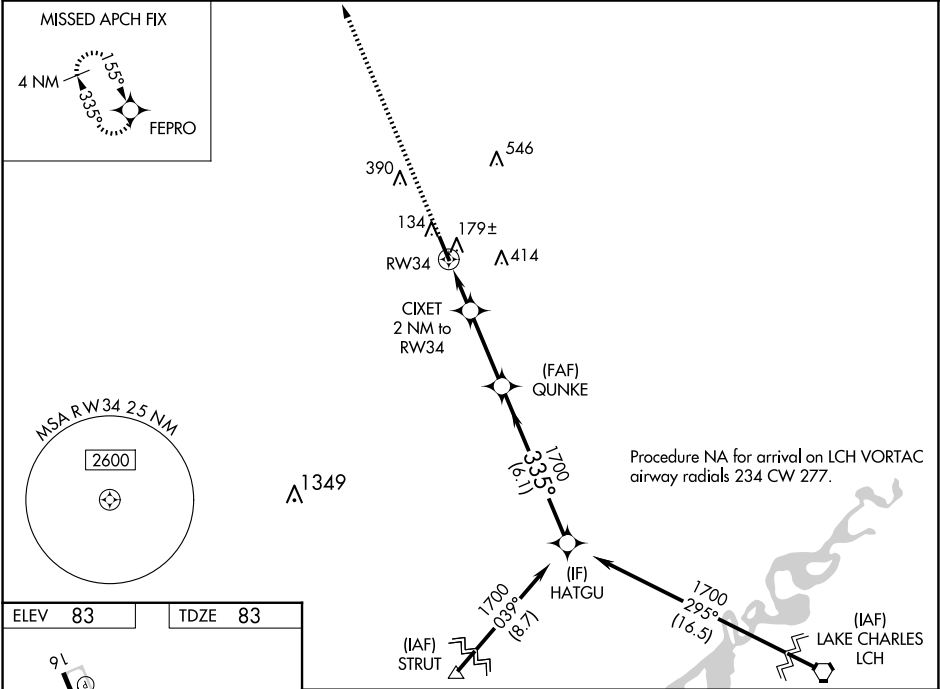
▼

▲ NA

For uncompensated Baro-VNAV systems, LNAV/VNAV NA below -1.5°C (5°F) or above 54°C (130°F). DME/DME RNP-0.3 NA. Helicopter visibility reduction below ¾ SM NA. When local altimeter setting not received, use Sulphur altimeter setting and increase all DA 55 feet and MDA 60 feet, increase LPV and LNAV/VNAV visibility all Cats ¼, LNAV and Circling Cat C visibility ⅜ mile. Baro-VNAV and VDP NA with Sulphur altimeter setting. Night landing Rwy 16 NA.

MISSED APPROACH: Climb to 1700 direct FEPRO and hold.

AWOS-3PT 121.2	LAKE CHARLES APP CON ★ 119.35 282.3	UNICOM 122.8 (CTAF) ①
--------------------------	---	---------------------------------



<div><div>1700 FEPRO</div><div>CIXET 2 NM to RW34</div><div>QUNKE 1700</div><div>HATGU</div><div>GP 3.00° TCH 50</div></div>			
<div><div>*LNAV only</div><div><div><div>1.3</div><div>0.7</div><div>2.9 NM</div><div>6.1 NM</div></div></div></div>			
CATEGORY	A		D
LPV DA	339-¾ 256 (300-¾)		NA
LNAV/VNAV DA	333-¾ 250 (300-¾)		NA
LNAV MDA	540-1 457 (500-1)	540-1¾ 457 (500-1¾)	NA
ⓐ CIRCLING	540-1 457 (500-1)	740-1 657 (700-1)	740-1¾ 657 (700-1¾) NA