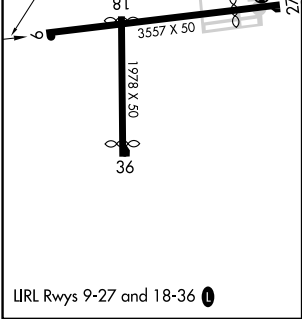
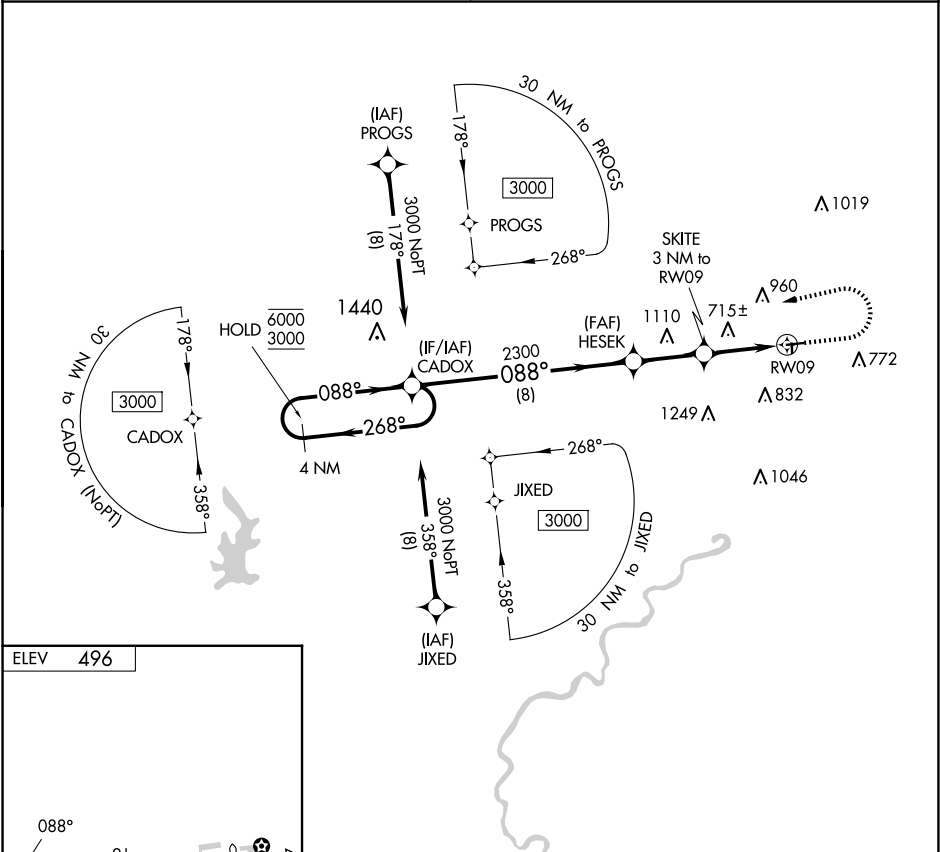


APP CRS	Rwy Idg	N/A
088°	TDZE	N/A
	Apt Elev	496

RNAV (GPS)-A  
SKY KING (3I3)

RNP APCH.	MISSED APPROACH: Climb to 1400 then climbing left turn to 3000 direct CADOX and hold.
Procedure NA at night. Use Terre Haute altimeter setting; when not received, use Paris altimeter setting and increase all MDA 40 feet.	

HULMAN APP CON 125.45 339.8	UNICOM 122.8 (CTAF) 0
--------------------------------	--------------------------



4 NM Holding Pattern	CADOX	HESEK	SKITE 3 NM to RW09	RW09
6000 3000	268° 088°	088°	3.00° TCH 40	1480
8 NM	2.6 NM	3 NM		
CATEGORY	A	B	C	D
CIRCLING	1000-1 504 (600-1)	1340-1¼ 844 (900-1¼)	NA	