

WAAS CH <b>49026</b> <b>W02A</b>	APP CRS <b>017°</b>	Rwy Ldg TDZE Apt Elev	<b>6020</b> <b>182</b> <b>194</b>
--	------------------------	-----------------------------	---

RNAV (GPS) RWY 2

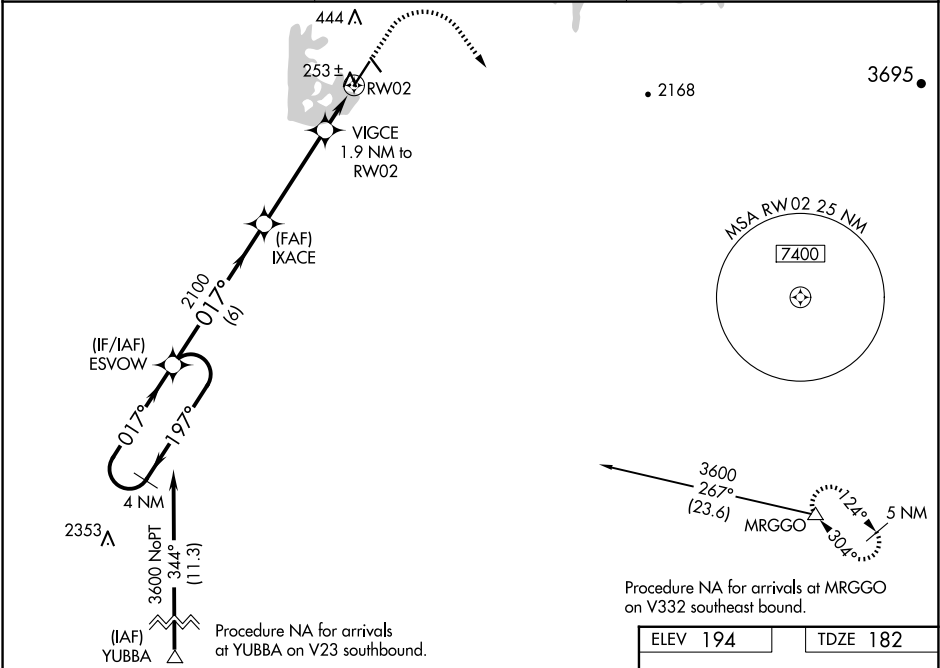
OROVILLE MUNI (OVE)

▼

For uncompensated Baro-VNAV systems, LNAV/VNAV NA below -2°C (29°F) or above 54°C (130°F). Circling NA northeast of Rwy 13-31. DME/DME RNP-0.3 NA.

MISSED APPROACH: Climb to 650 then climbing right turn to 6000 direct MRGGO and hold, continue climb-in-hold to 6000.

ASOS <b>121.425</b>	NORCAL APP CON <b>125.4 259.1</b>	UNICOM <b>122.8 (CTAF)</b> <b>0</b>
------------------------	--------------------------------------	--



VGSI and RNP glidepath angles not coincident (VGSI Angle 3.00/TCH 44).

4 NM Holding Pattern

ESVOW

3600 ← 197°

017° →

GP 3.00°

TCH 40

IXACE

2100

017°

VIGCE 1.9 NM to RWY 2

\* 820

\* 0.9 NM to RWY 2

RWY 2

\* LNAV only

6 NM

4 NM

1 NM

0.9

CATEGORY	A	B	C	D
LPV DA		432-7/8	250 (300-7/8)	
LNAV/VNAV DA		432-7/8	250 (300-7/8)	
LNAV MDA		520-1	338 (400-1)	
CIRCLING	580-1 386 (400-1)	660-1 466 (500-1)	660-1½ 466 (500-1½)	780-2 586 (600-2)

ELEV 194

TDZE 182