

KINGDOM FIVE DEPARTURE

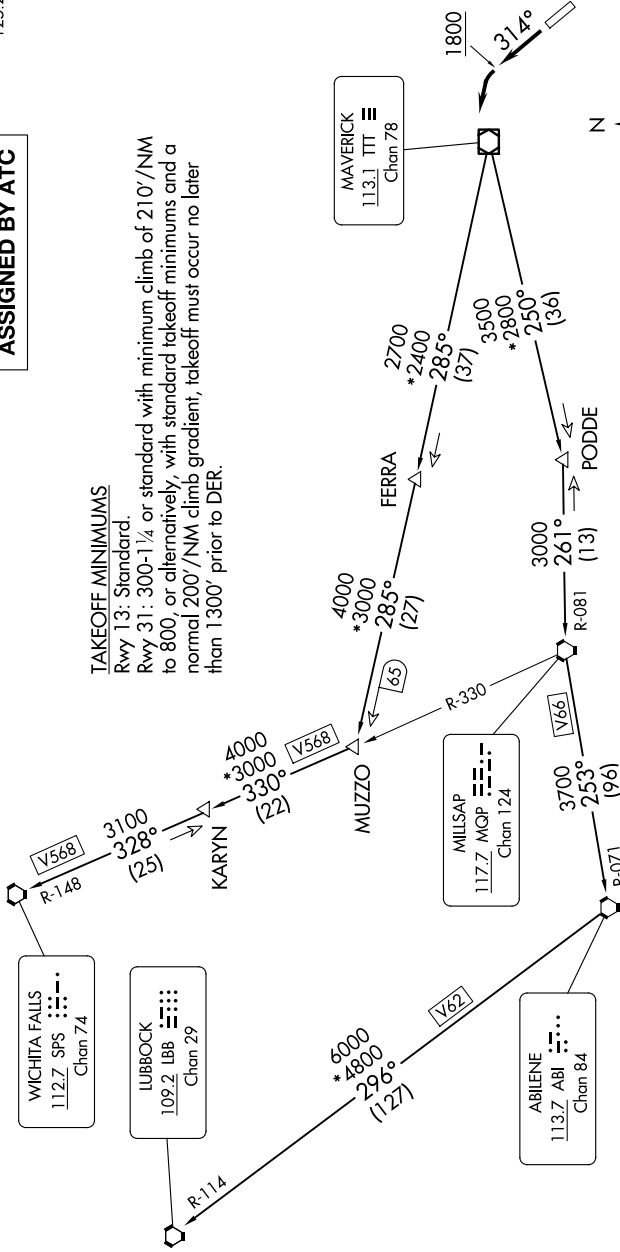
SC-2, 10 JUL 2025 to 07 AUG 2025

LONE STAR DEP CON
125.2 343.65
CTAF
122.7

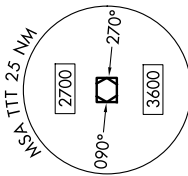
TOP ALTITUDE:
ASSIGNED BY ATC

RADAR and DME required.

TAKEOFF MINIMUMS
Rwy 13: Standard.
Rwy 31: 300-1¼ or standard with minimum climb of 210'/NM to 800, or alternatively, with standard takeoff minimums and a normal 200'/NM climb gradient, takeoff must occur no later than 1300' prior to DER.



- NOTE: LUBBOCK Transition: For all aircraft overflying the MQP VORTAC westbound or direct.
- NOTE: MILLSAP Transition: For all aircraft overflying the MQP VORTAC westbound or direct.
- NOTE: PODDE Transition: ATC assigned.
- NOTE: WICHITA FALLS Transition: For all aircraft landing within the Wichita Falls terminal area or overflying the SPS VORTAC.
- NOTE: For all aircraft requesting 17000 and below.



NOTE: Chart not to scale.

(CONTINUED ON FOLLOWING PAGE)

SC-2, 10 JUL 2025 to 07 AUG 2025

KINGDOM FIVE DEPARTURE