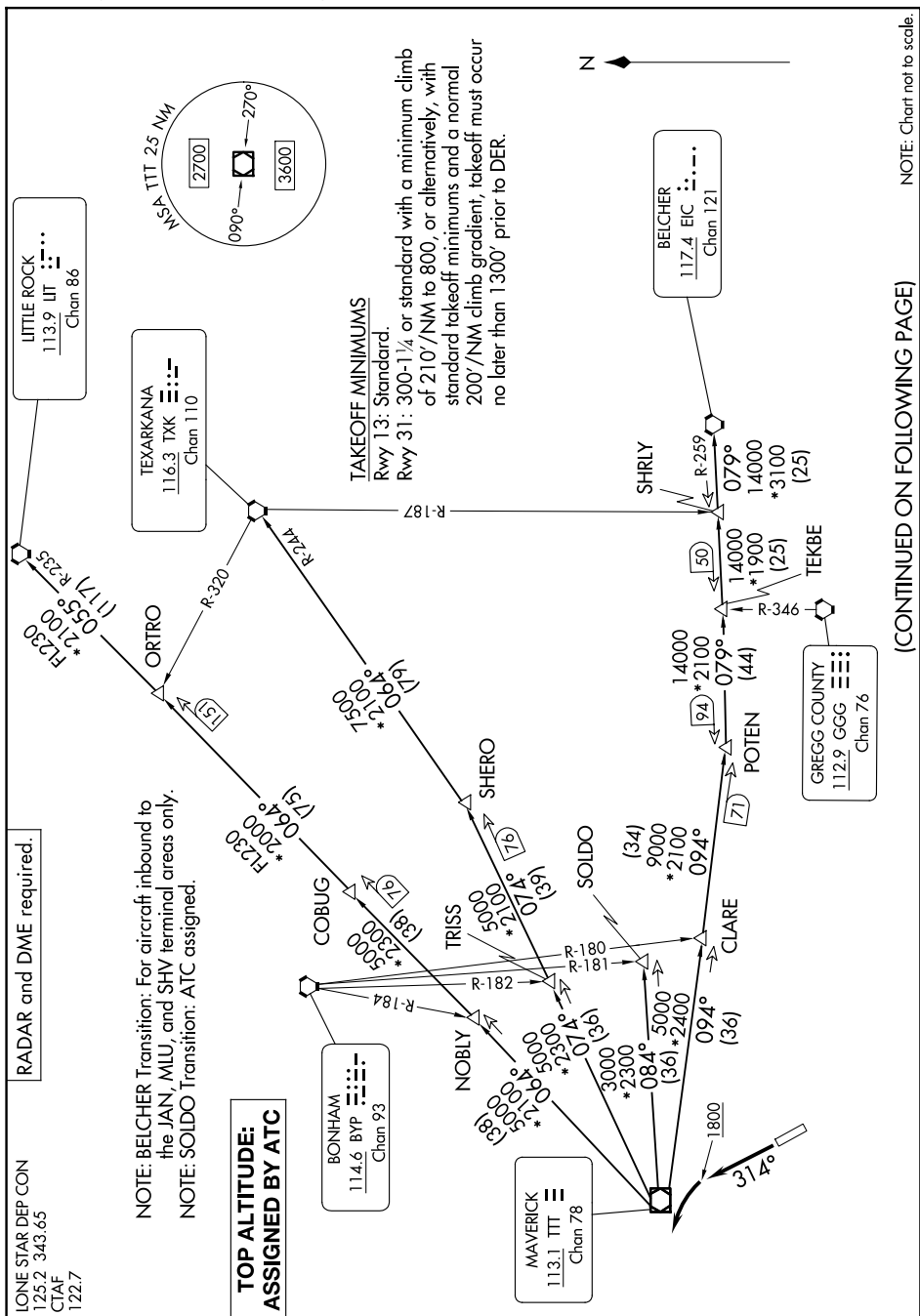


DALLAS THREE DEPARTURE



NOTE: Chart not to scale.

(CONTINUED ON FOLLOWING PAGE)

SC-2, 10 JUL 2025 to 07 AUG 2025

LONE STAR DEP CON
125.2 343.65
CTAF
122.7

RADAR and DME required.

NOTE: BELCHER Transition: For aircraft inbound to the JAN, MLU, and SHV terminal areas only.
NOTE: SOLDI Transition: ATC assigned.

**TOP ALTITUDE:
ASSIGNED BY ATC**

BONHAM
114.6 BYP $\frac{\cdot\cdot\cdot}{\cdot\cdot\cdot}$
Chan 93

113.1 TTT
Chen 78

GREGG COUNTY
112.9 GGG
Chen 76

TEKBE

(37)

NCA:

RGN
NCA

RGN

NCA

RGN

INCASTER, TEXAS

RGNL (LNC)

INCASTER, TEXAS

RGNL (LNC)