

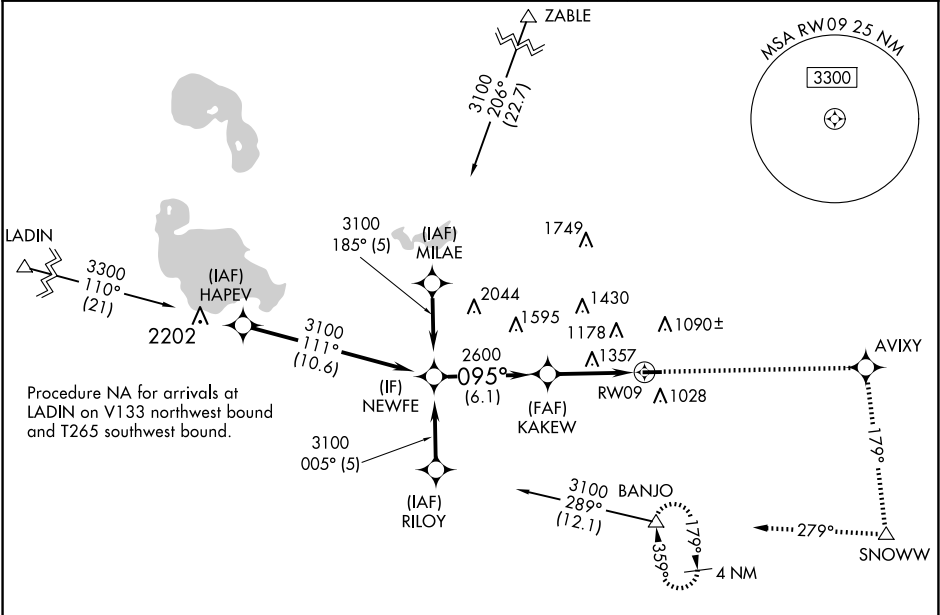
| | | |
|---------|----------|------|
| APP CRS | Rwy Idg | 5000 |
| 095° | TDZE | 882 |
| | Apt Elev | 882 |

RNAV (GPS) RWY 9

WEST BRANCH COMMUNITY (Y31)

| | |
|--|---|
| RNP APCH - GPS. | MISSED APPROACH: Climb to 4000 direct AVIXY and via track 179° to SNOWW and via track 279° to BANJO and hold. |
| ▼ Rwy 9 helicopter visibility reduction below 1 SM NA. When local altimeter setting not received, use MBS Intl altimeter setting and increase all MDA 140 feet, increase LNAV Cat A visibility ¼ mile and Cat C/D ½ mile, increase Circling Cat A visibility ¼ mile and Cat C/D ½ mile. Straight-in Rwy 9 NA at night, Circling Rwy 9 NA at night. | |

| | | |
|--------------------|--------------------------------------|------------------------|
| AWOS-3P 119.575 | MINNEAPOLIS CENTER 125.475 269.45 | UNICOM 122.8 (CTAF) |
|--------------------|--------------------------------------|------------------------|



| | | | |
|-------------------|--|---------------|--|
| ELEV 882 | | TDZE 882 | |
| Procedure Turn NA | | 4000 AVIXY | |
| NEWFE | | SNOWW | |
| KAKEW | | BANJO | |
| RWY 9 | | RWY 27 | |
| 6.1 NM | | 5.2 NM | |
| CATEGORY | | CATEGORY | |
| LNAV MDA | | LNAV MDA | |
| CIRCLING | | CIRCLING | |
| REIL Rwy 9 and 27 | | REIL Rwy 9-27 | |
| MIRL Rwy 9-27 | | MIRL Rwy 9-27 | |