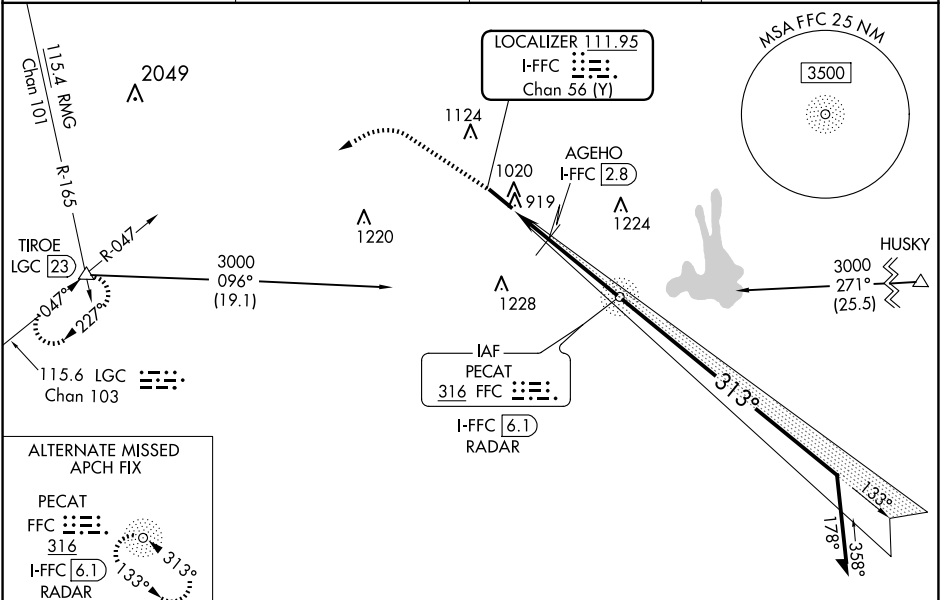


LOC/DME I-FFC 111.95 Chan 56(Y)	APP CRS 313°	Rwy Idg TDZE Apt Elev 5118 807 808
---	------------------------	--

ILS or LOC RWY 31
ATLANTA RGNL FALCON FLD (F'F'C)

DME or ADF or RADAR required.	ODALS 	MISSED APPROACH: Climb to 1700 then climbing left turn to 4000 on heading 275° and LGC VORTAC R-047 to TIROE INT/LGC 23 DME and hold.
 Circling Rwy 13 NA at night. Rwy 31 helicopter visibility reduction below 3/4 SM NA. Inop table does not apply to S-ILS 31 and to S-LOC 31 Cats C/D.		

ASOS 118.525	ATLANTA APP CON 119.8 354.125	CLNC DEL 119.8	UNICOM 123.05 (CTAF)
------------------------	---	--------------------------	--------------------------------



ELEV 808	D	TDZE 807	<div><div>1700</div><div>4000</div><div>LGC R-047</div><div>TIROE</div></div>		<div>FFC NDB PECAT I-FFC 6.1 RADAR</div>		<div>VGSI and ILS glidepath not coincident (VGSI Angle 3.00/TCH 45).</div> <div>Remain within 10 NM</div>					
<div></div>			<div><div>AGEHO I-FFC 2.8</div><div>I-FFC 2</div><div>I-FFC 1</div></div>		<div><div>2467</div><div>133°</div><div>313°</div><div>2500</div><div>2500</div><div>1320</div><div>1 NM</div><div>0.8</div><div>3.3 NM</div></div>							
			CATEGORY		A		B		C		D	
			S-ILS 31		1059-3/4		252 (300-3/4)					
			S-LOC 31		1320-3/4 513 (600-3/4)		1320-1 513 (600-1)		1440-1 513 (600-1)		1540-2 513 (600-2)	
			CIRCLING		1320-1 512 (600-1)		632 (700-1 3/4)		732 (800-2 1/4)			
			AGEHO FIX MINIMUMS (DME REQUIRED)									
			S-LOC 31		1180-3/4 373 (400-3/4)		1180-1 373 (400-1)					
			CIRCLING		1320-1 512 (600-1)		632 (700-1 3/4)		732 (800-2 1/4)			
REIL Rwy 13												
MIRL Rwy 13-31												
FAF to MAP 5.1 NM												
Knots			60	90	120	150	180					
Min:Sec			5:06	3:24	2:33	2:02	1:42					

SE-4, 10 JUL 2025 to 07 AUG 2025

SE-4, 10 JUL 2025 to 07 AUG 2025