

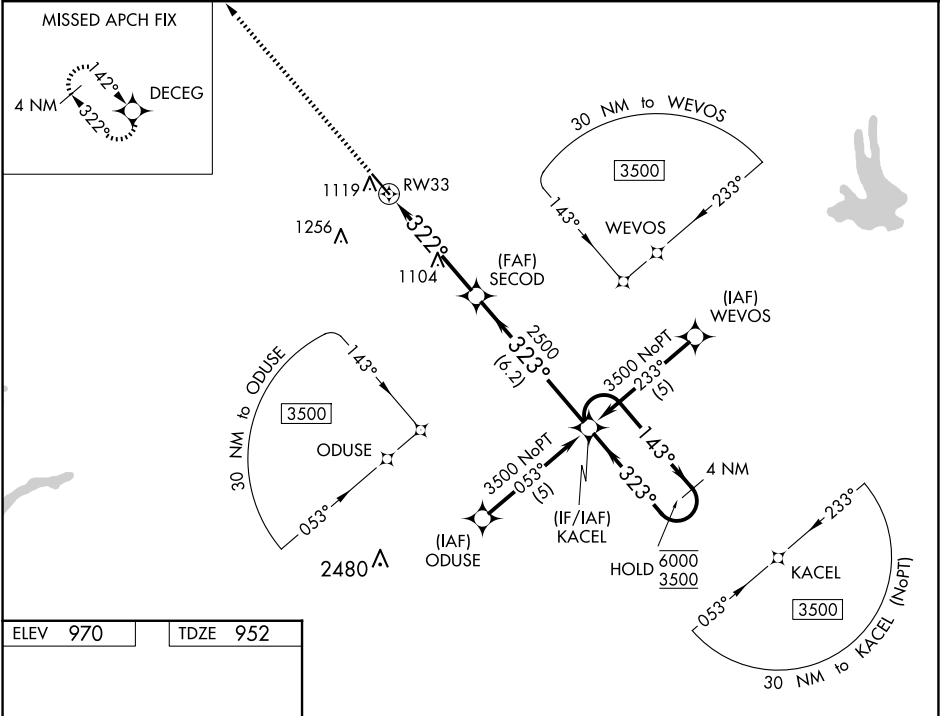
WAAS CH 77528 W33A	APP CRS 322°	Rwy Idg TDZE 952 Apt Elev 970
--	------------------------	---

RNAV (GPS) RWY 33

NEWNAN COWETA COUNTY (C'CO)

RNP APCH. <div><div><div></div><div></div></div><div>Rwy 33 helicopter visibility reduction below ¾ SM NA. For uncompensated Baro-VNAV systems, LNAV/VNAV NA below -16°C or above 46°C. For inop ALS, increase LPV and LNAV/VNAV all Cats and LNAV Cats C/D visibilities to 1 ½ SM.</div></div>	MALSF <div><div></div><div></div></div>	MISSED APPROACH: Climb to 3500 direct DECEG and hold.
--	--	--

AWOS-3PT 118.975	ATLANTA APP CON 119.8 354.125	GCO 121.725	UNICOM 122.7 (CTAF) 0
----------------------------	---	-----------------------	---------------------------------



ELEV 970	TDZE 952
----------	----------

