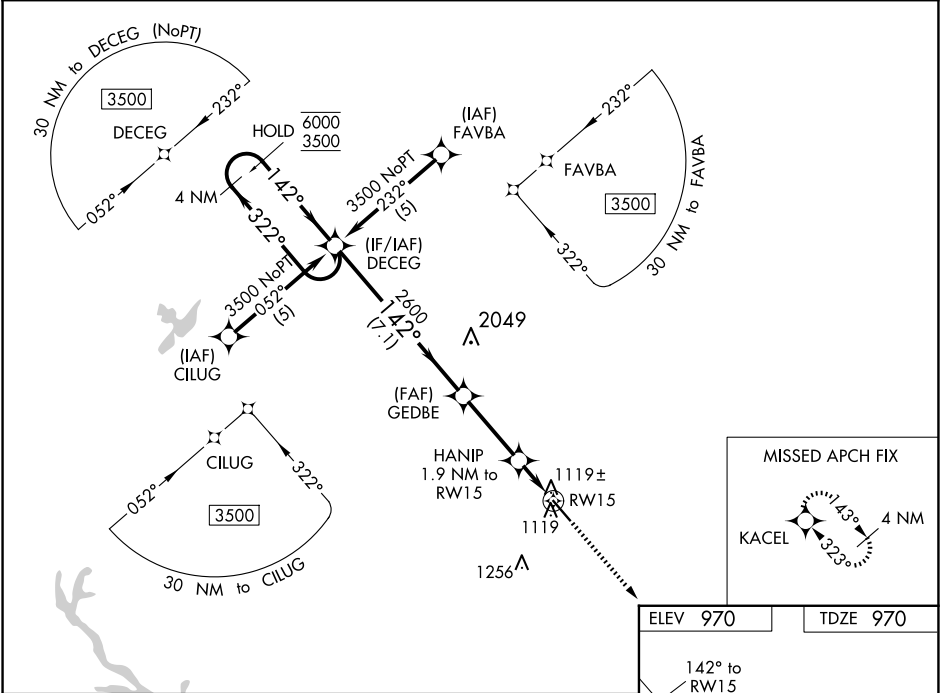


WAAS CH 70515 W15A	APP CRS 142°	Rwy Idg TDZE 970 Apt Elev 970
--	------------------------	---

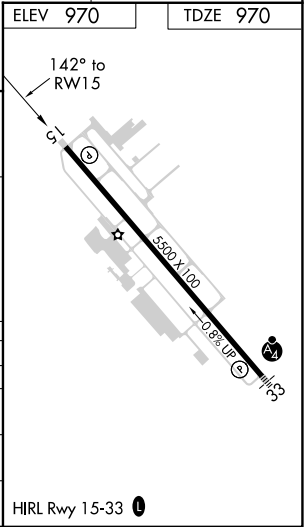
RNAV (GPS) RWY 15
NEWNAN COWETA COUNTY (C'CO)

RNP APCH.	MISSED APPROACH: Climb to 3500 direct KACEL and hold.
-----------	---

AWOS-3PT 118.975	ATLANTA APP CON 119.8 354.125	GCO 121.725	UNICOM 122.7 (CTAF) 0
----------------------------	---	-----------------------	---------------------------------



4 NM Holding Pattern		VGSI and RNAV glidepath not coincident (VGSI Angle 3.00/TCH 40).		3500 KACEL	
6000 ← 322°		DECEG		↑ *RNAV only.	
3500 → 142°		GEDBE 2600		HANIP 1.9 NM to RW15	
GP 3.00° TCH 56		2600		*1.2 NM to RW15	
		*1620		RW15	
		7.1 NM		0.7	
		3 NM		1.2 NM	
CATEGORY	A	B	C	D	
LPV DA	1300-1		330 (400-1)		
RNAV/VNAV DA	1389-1½		419 (500-1½)		
RNAV MDA	1380-1	410 (500-1)	1380-1¼	410 (500-1¼)	
CIRCLING	1420-1	450 (500-1)	1560-1½ 590 (600-1½)	1560-2 590 (600-2)	



SE-4, 10 JUL 2025 to 07 AUG 2025

SE-4, 10 JUL 2025 to 07 AUG 2025