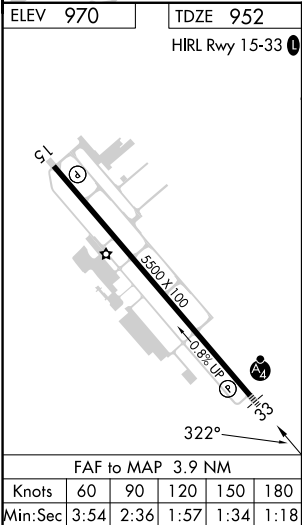
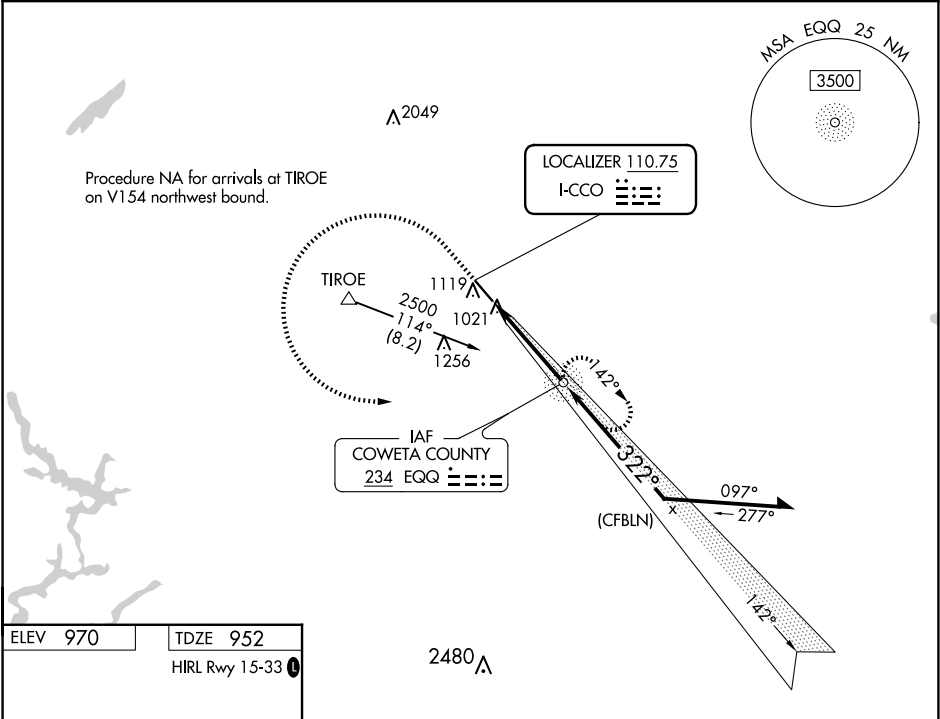


LOC I-CCO	APP CRS	Rwy Idg	5500
110.75	322°	TDZE	952
		Apt Elev	970

ILS or LOC RWY 33  
NEWNAN COWETA COUNTY (C'CO)

ADF required.	MALSF	MISSED APPROACH: Climb to 1800 then climbing left turn to 2500 direct EQQ NDB and hold, continue climb-in-hold to 2500.
Rwy 33 helicopter visibility reduction below ¾ SM NA. Inop table does not apply to S-ILS 33.		

AWOS-3PT 118.975	ATLANTA APP CON 119.8 354.125	GCO 121.725	UNICOM 122.7 (CTAF) 0
---------------------	----------------------------------	----------------	--------------------------



1800	2500	EQQ	VGSi and ILS glidepath not coincident (VGSi Angle 3.00/TCH 49).			
			Remain within 10 NM			
			GS 3.00° TCH 44			
			3.9 NM			
CATEGORY	A	B	C	D		
S-ILS 33	1202-¾		250 (300-¾)			
S-LOC 33	1340-¾		388 (400-¾)		1340-⅞ 388 (400-⅞)	
CIRCLING	1420-1		450 (500-1)		1560-1½ 590 (600-1½)	
					1560-2 590 (600-2)	