

WAAS CH <b>93933</b> <b>W29A</b>	APP CRS <b>294°</b>	Rwy Idg <b>5103</b> TDZE <b>579</b> Apt Elev <b>585</b>
--	------------------------	---

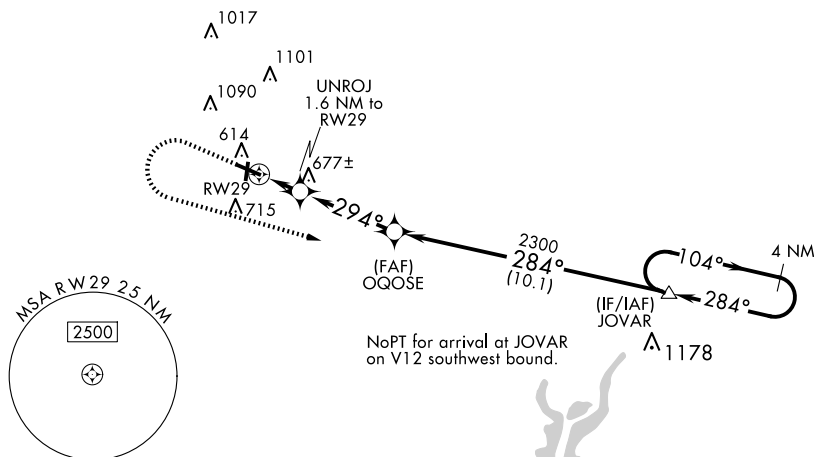
RNAV (GPS) RWY 29  
EFFINGHAM COUNTY RGNL (1H2)

RNP APCH.

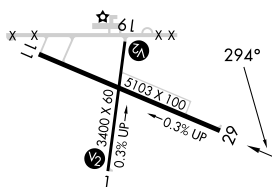
**▼** Rwy 29 helicopter visibility reduction below  $\frac{3}{4}$  SM NA. Straight-in Rwy 1 NA at night. Circling Rwy 1, 19 NA at night. For uncompensated Baro-VNAV systems, LNAV/VNAV below -16°C or above 54°C. Baro-VNAV and VDP NA when using Olney-Noble altimeter setting. When local altimeter setting not received, use Olney-Noble altimeter setting and increase all DA 77 feet and all MDA 80 feet; increase LPV all Cats and Circling Cat C/D visibility  $\frac{1}{4}$  SM, increase LNAV/VNAV all Cats visibility  $\frac{1}{8}$  SM.

**MISSED APPROACH:**  
Climb to 1800 then  
climbing left turn to  
2300 direct JOVAR  
and hold.

AWOS-3PT <b>118.375</b>	KANSAS CITY CENTER <b>124.3 269.15</b>	UNICOM <b>122.725 (CTAF) 0</b>
----------------------------	---	-----------------------------------



ELEV	585	TDZE	579
------	-----	------	-----



REIL Rwy 11 and 29 **L**  
MIRL Rwy 1-19 and 11-29 **L**

**\*LNAV only.**

UNROJ  
1.6 NM to RW29

\*1 NM to RW29

RW29

294°

\*1120

2300

2300

GP 3.00° TCH 45

1 NM | 0.6 NM | 3.7 NM | 10.1 NM

CATEGORY	A	B	C	D
LPV DA	838-7/8		259 (300-7/8)	
LNAV/VNAV DA	859-7/8		280 (300-7/8)	
LNAV MDA	940-1		361 (400-1)	

**C CIRCLING**

	1020-1 435 (500-1)	1140-1 555 (600-1)	1440-2½ 855 (900-2½)	1440-2¾ 855 (900-2¾)
--	-----------------------	-----------------------	-------------------------	-------------------------

## RNAV (GPS) RWY 29