

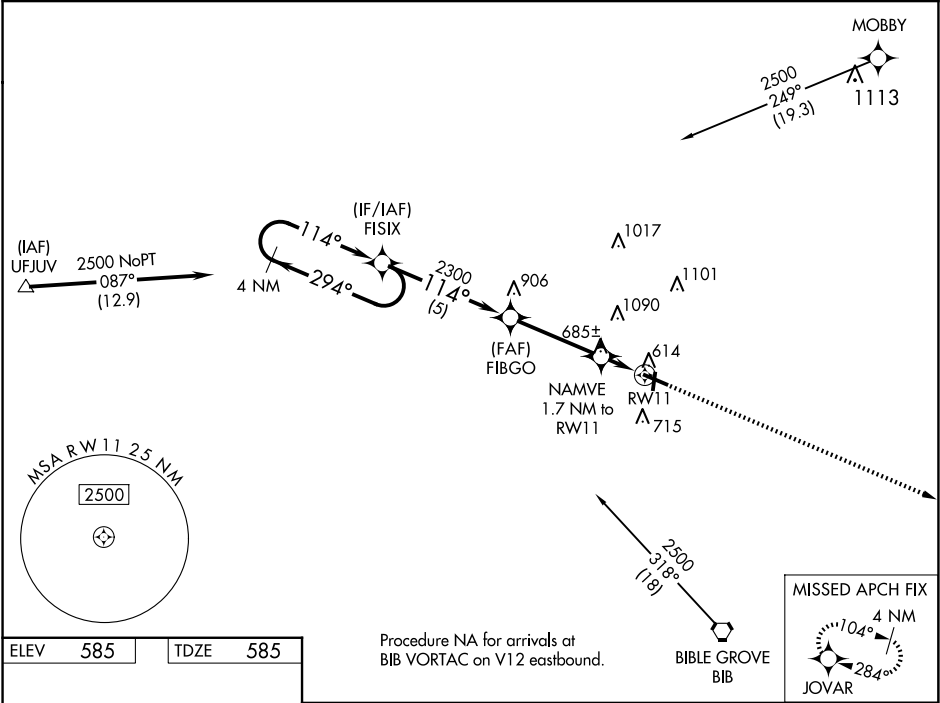
RNP APCH.

▼

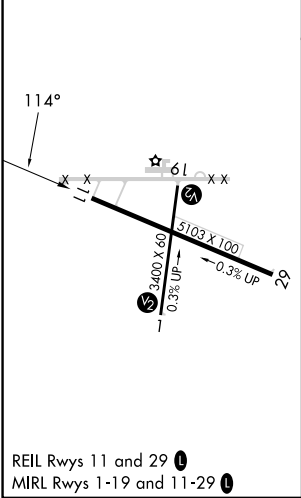
For uncompensated Baro-VNAV systems, LNAV/VNAV NA below -16°C or above 54°C. Straight-in Rwy 1 NA at night, Circling Rwy 1, 19 NA at night.

MISSED APPROACH: Climb to 2300 direct JOVAR and hold.

AWOS-3PT 118.375	KANSAS CITY CENTER 124.3 269.15	UNICOM 122.725 (CTAF) 0
---------------------	------------------------------------	----------------------------



ELEV 585	TDZE 585
----------	----------



Procedure NA for arrivals at BIB VORTAC on V12 eastbound.				
4 NM Holding Pattern				
2500 ← 294° 114° → 2300				
GP 3.00° TCH 45				
2300 114° 2300				
NAMVE 1.7 NM to RW11				
* 1160				
* 1 NM to RW11				
RW11				
5 NM 3.5 NM 0.7 NM 1 NM				
CATEGORY	A	B	C	D
LPV DA		835-1	250 (300-1)	
LNAV/VNAV DA		856-1	271 (300-1)	
LNAV MDA		940-1	355 (400-1)	
CIRCLING	1020-1 435 (500-1)	1140-1 555 (600-1)	1440-2½ 855 (900-2½)	1440-2¾ 855 (900-2¾)