

APP CRS 086°	Rwy Idg 4802
	TDZE 605
	Apt Elev 606

RNAV (GPS) RWY 8

IOSCO COUNTY (6D9)

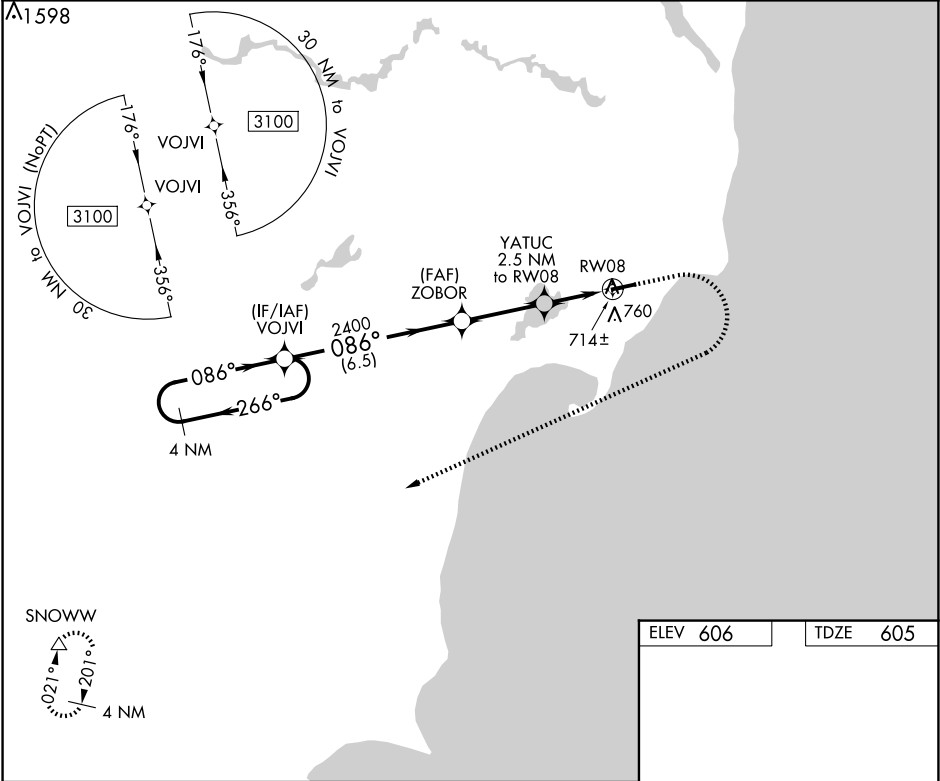
▼

NA

DME/DME RNP-0.3 NA. Procedure NA at night. Helicopter visibility reduction below 1 SM NA. Use Oscoda altimeter setting: when not received, use Bad Axe altimeter setting and increase all MDA 100 feet; increase LNAV Cats C and D visibilities ¼ mile, increase Circling visibility Cat C ¼ mile.

MISSED APPROACH: Climb to 1100 then climbing right turn to 3500 direct SNOWW and hold.

OSC AWOS-3 118.7	MINNEAPOLIS CENTER 125.475 269.45	UNICOM 122.8 (CTAF)	122.85 0
----------------------------	---	-------------------------------	-----------------



Visual Segment - Obstacles.					<div>1100</div> <div>3500</div> <div>SNOWW</div> <div>△</div>	
<div>3100</div> <div>086°</div> <div>266°</div> <div>086°</div> <div>2400</div> <div>1440</div> <div>6.5 NM</div> <div>3 NM</div> <div>2.5 NM</div> <div>VOJVI</div> <div>ZOBOR</div> <div>YATUC</div> <div>2.5 NM to RW08</div> <div>RW08</div>					<div>086°</div> <div>4802 X 75</div> <div>26</div>	
CATEGORY	A	B	C	D		
LNAV MDA	1000 - 1	395 (400-1)	1000 - 1⅛	395 (400-1⅛)		
CIRCLING	1120 - 1	514 (600-1)	1120 - 1½	1160 - 2		
			514 (600-1½)	554 (600-2)		
					REIL Rwys 8 and 26 0	
					MIRL Rwy 8-26 0	