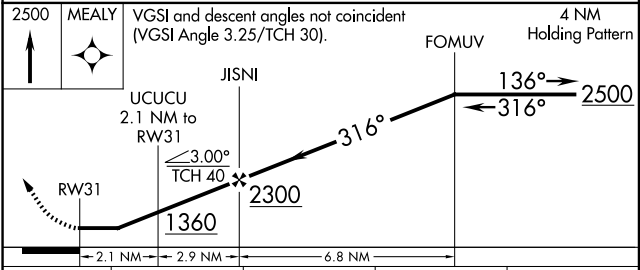
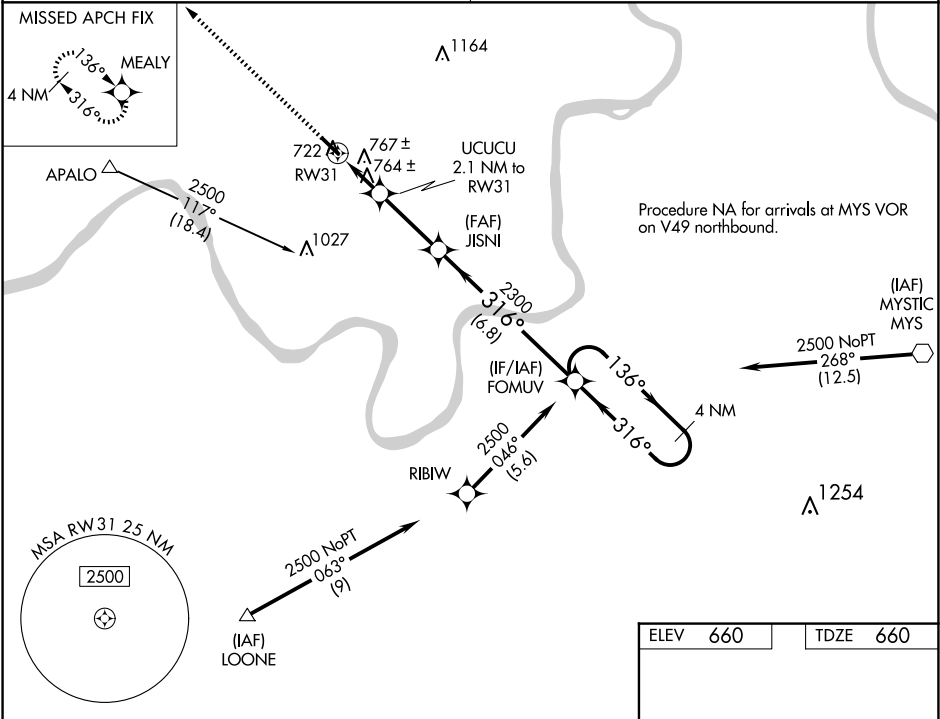


WAAS CH <b>93623</b> <b>W31A</b>	APP CRS <b>316°</b>	Rwy Idg TDZE <b>660</b> Apt Elev <b>660</b>
--	------------------------	---

RNAV (GPS) RWY 31  
PERRY COUNTY MUNI (TEL)

<p><b>NA</b></p> <p>When VGSI inop, Circling Rwy 13 NA at night. When VGSI inop, Straight-in/Circling Rwy 31 procedure NA at night. DME/DME RNP-0.3 NA. Visibility reduction by helicopters NA. Obtain local altimeter setting on CTAF; when not received, use Huntingburg altimeter setting and increase all MDA 80 feet and increase LP and LNAV Cat C visibility ¼ mile.</p>	<p><b>MISSED APPROACH:</b> Climb to 2500 direct MEALY and hold.</p>
---	---

<p>EVANSVILLE APP CON ★ <b>124.025 290.9</b></p>	<p>UNICOM <b>122.7 (CTAF) 0</b></p>
--	---



CATEGORY	A	B	C	D
LP MDA	1020-1	360 (400-1)		NA
LNAV MDA	1020-1	360 (400-1)		NA
CIRCLING	1080-1 420 (500-1)	1120-1 460 (500-1)	1120-1½ 460 (500-1½)	NA

