

WAAS CH <b>86501</b> <b>W18A</b>	APP CRS <b>185°</b>	Rwy Idg TDZE <b>740</b> Apt Elev <b>764</b>
--	------------------------	---

**RNAV (GPS) RWY 18**  
HUNTSVILLE EXEC TOM SHARP JR FLD (MDQ)

RNP APCH.

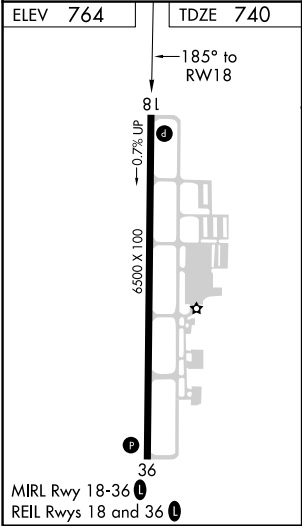
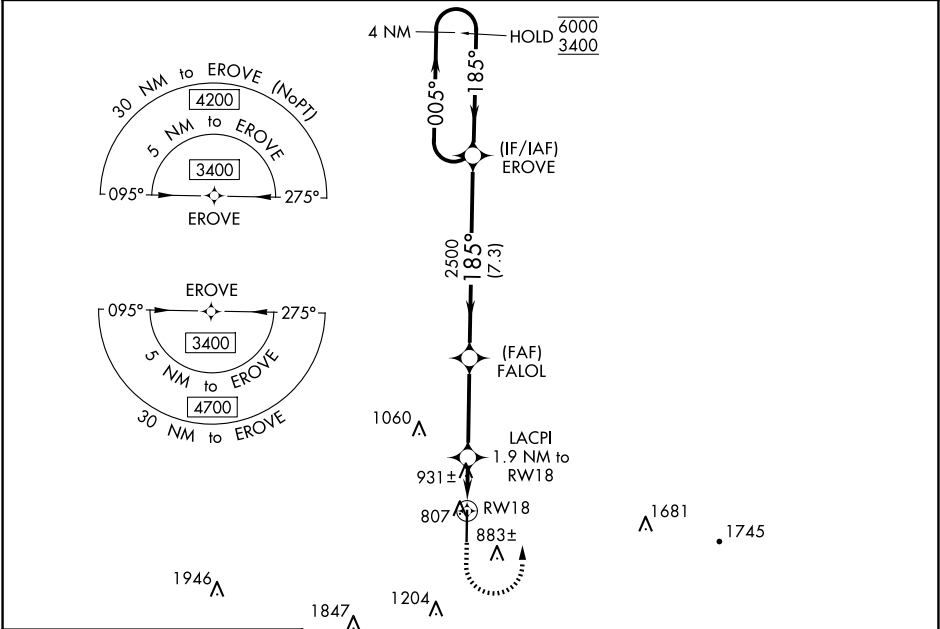
▼

▲

Rwy 18 helicopter visibility reduction below ¾ SM NA.  
For uncompensated Baro-VNAV systems, procedure NA below -16°C or above 54°C.

MISSED APPROACH: Climb to 1500 then climbing left turn to 3400 direct EROVE and hold.

AWOS-3PT <b>120.0</b>	HUNTSVILLE APP CON ★ <b>125.6 354.1</b>	GCO <b>121.725</b>	UNICOM <b>123.0 (CTAF) 0</b>
--------------------------	--	-----------------------	---------------------------------



1500 3400 EROVE

\*LNAV only.

LACPI 1.9 NM to RW18

FALOL 2500

EROVE 4 NM Holding Pattern

005° 6000 185° 3400

GP 3.00° TCH 43

CATEGORY	A	B	C	D
LPV DA	940-¾		200 (200-¾)	
LNAV/VNAV DA	1250-1¾		510 (500-1¾)	
LNAV MDA	1200-1 460 (500-1)		1200-1¾ 460 (500-1¾)	
CIRCLING	1260-1 496 (500-1)		1560-2¼ 796 (800-2¼) 2000-3 1236 (1300-3)	

SE-4, 10 JUL 2025 to 07 AUG 2025

SE-4, 10 JUL 2025 to 07 AUG 2025