

WAAS CH <b>90309</b> <b>W19A</b>	APP CRS <b>189°</b>	Rwy Idg TDZE Apt Elev	<b>4500</b> <b>568</b> <b>588</b>
--	------------------------	-----------------------------	---

RNAV (GPS) RWY 19

LEBANON MUNI (M54)

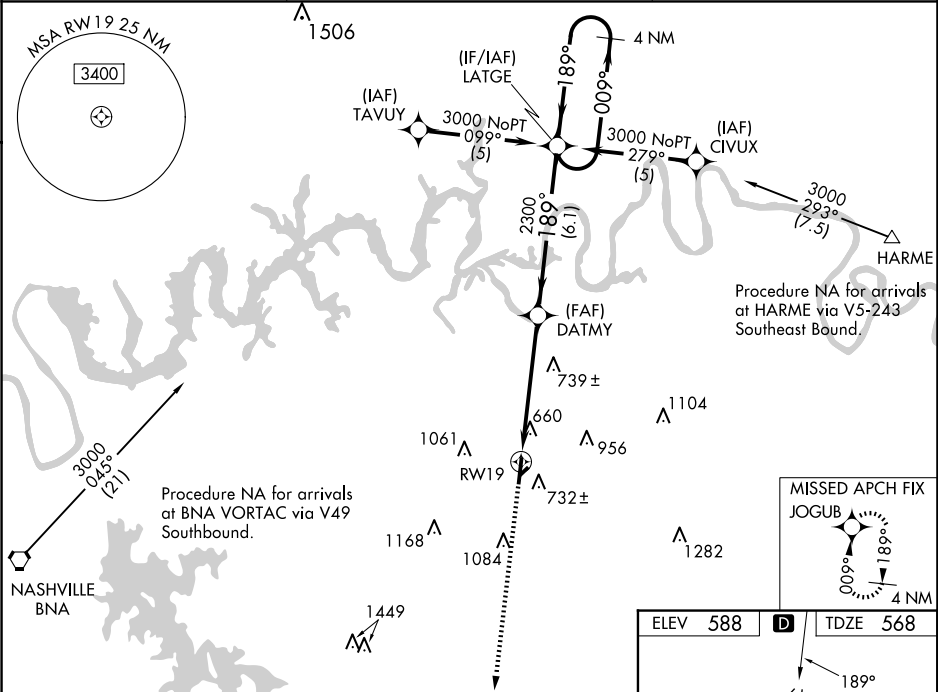
▼

▲NA

Baro-VNAV NA when using Nashville Intl altimeter setting. For uncompensated Baro-VNAV systems, LNAV/VNAV NA below -16° C (4° F) or above 47° C (116° F). DME/DME RNP-0.3 NA. Visibility reduction by helicopters NA. When local altimeter setting not received, use Nashville Intl altimeter setting: increase LPV DA to 942; increase all MDA 60 feet and Circling Cat C visibility ¼ SM.

MISSED APPROACH:  
Climb to 3000 direct JOGUB and hold.

AWOS-3 <b>118.325</b>	NASHVILLE APP CON <b>118.4 360.7</b>	CTAF <b>122.725</b>
--------------------------	---	------------------------



3000	JOGUB	VGS1 and RNAV glidepath not coincident (VGS1 Angle 3.00/ TCH 21).	LATGE	4 NM Holding Pattern
		DATMY	009° 189° 3000	GP 3.00° TCH 45
5.3 NM		6.1 NM		
CATEGORY	A	B	C	D
LPV DA	899-1¼ 331 (400-1¼)			
LNAV/VNAV DA	996-1½ 428 (500-1½)			
LNAV MDA	1000-1	432 (500-1)	1000-1¼ 432 (500-1¼)	1000-1½ 432 (500-1½)
CIRCLING	1100-1 512 (600-1)	1200-1 612 (700-1)	1440-2½ 852 (900-2½)	1520-3 932 (1000-3)

