

WAAS CH 65809 W01A	APP CRS 009°	Rwy Idg 4527 TDZE 588 Apt Elev 588
--	------------------------	---

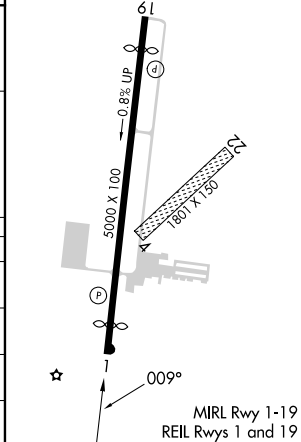
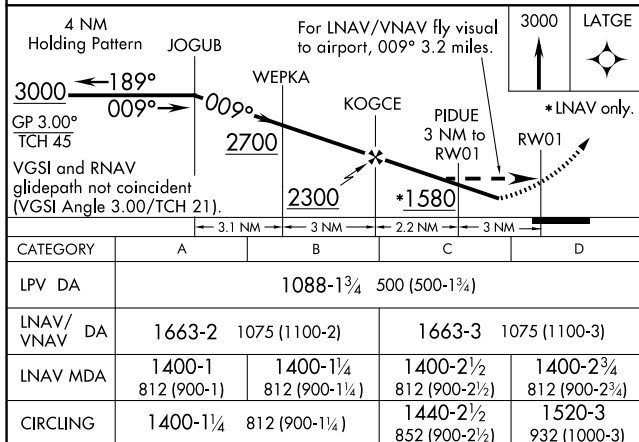
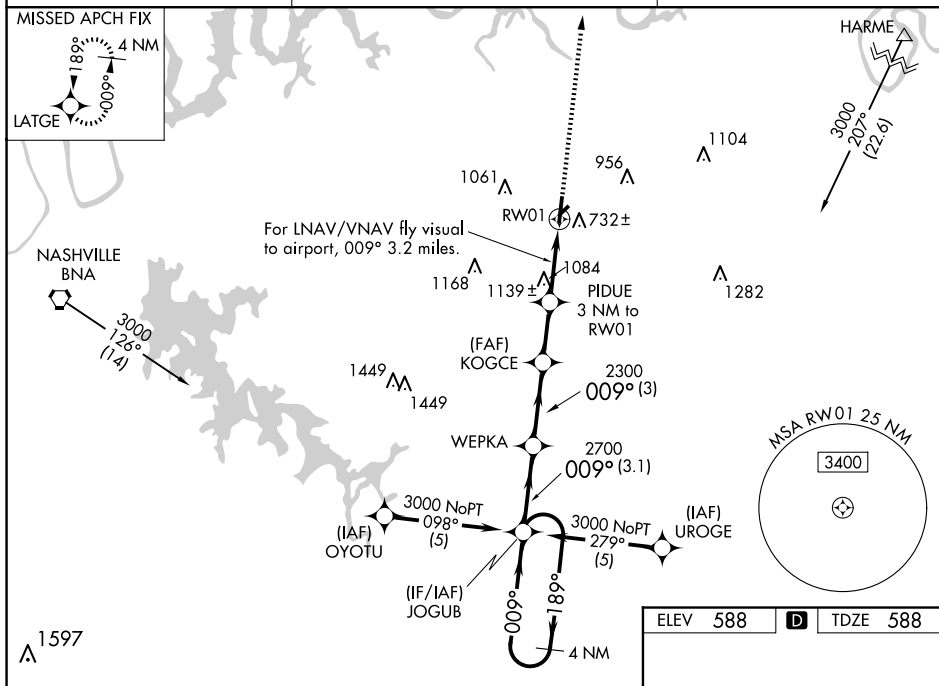
RNAV (GPS) RWY 1
LEBANON MUNI (M54)

▼
▲ NA

For uncompensated Baro-VNAV systems, LNAV/VNAV NA below -16° C (4° F) or above 47° C (116° F). DME/DME RNP-0.3 NA. Visibility reduction by helicopters NA. When local altimeter setting not received, use Nashville Intl altimeter setting: increase LPV DA to 1131 and all Cats visibility ½ SM; increase all MDA 60 feet and Circling Cat C visibility ¼ SM. LNAV/VNAV NA when using Nashville Intl altimeter setting.

MISSED APPROACH:
Climb to 3000 direct
LATGE and hold.

AWOS-3 118.325	NASHVILLE APP CON 118.4 360.7	CTAF 122.725
--------------------------	---	------------------------



RNAV (GPS) RWY 1