

WAAS CH 58322 W18A	APP CRS 178°	Rwy Idg TDZE Apt Elev	5005 140 140
--	------------------------	-----------------------------	---

RNAV (GPS) RWY 18

CLEVELAND MUNI (RNV)

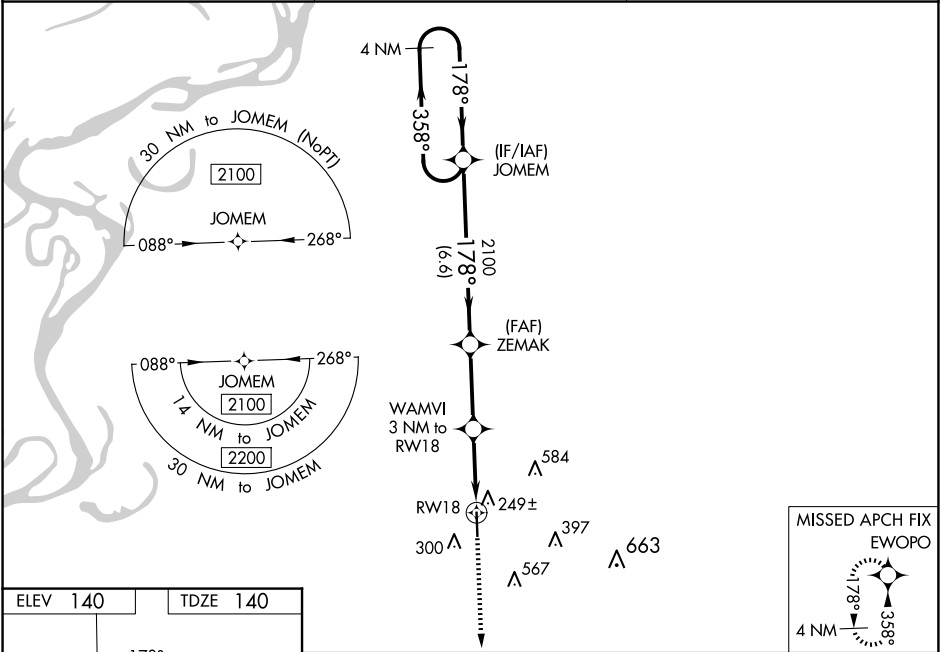
⚠

⚠

For uncompensated Baro-VNAV systems, LNAV/VNAV NA below -1.5°C (5°F) or above 54°C (130°F). DME/DME RNP-0.3 NA. When local altimeter setting not received, use Greenville altimeter setting and increase LPV DA to 438, LNAV/VNAV DA to 597, and all MDA 60 feet; increase LPV all Cats and LNAV Cats C/D visibility ½ mile, increase LNAV/VNAV all Cats visibility ¼ mile. Baro-VNAV and VDP NA when using Greenville altimeter setting. Rwy 18 helicopter visibility reduction below ¾ SM NA.

MISSED APPROACH:
Climb to 2100 direct
EWOP and hold.

AWOS-3PT 124.175	MEMPHIS CENTER 135.875 269.35	UNICOM 122.725 (CTAF) ❶
----------------------------	---	-----------------------------------



ELEV 140

TDZE 140

178°

81

5005 X 75

36

MIRL Rwy 18-36 ❶

REIL Rwys 18 and 36 ❶

<div>4 NM Holding Pattern</div> <div><div><div>2100 ← 358°</div><div>178° → 2100</div></div><div>GP 3.00° TCH 42</div></div> <div><div>JOMEM</div><div>ZEMAK</div><div>WAMVI 3 NM to RW18</div></div> <div><div>2100</div><div>*1120</div><div>*1 NM to RW18</div></div> <div><div>6.6 NM</div><div>3 NM</div><div>2 NM</div><div>1 NM</div></div> <div><div>2100 ↑</div><div>EWOPOL</div></div> <div>*LNAV only.</div>								
CATEGORY	A	B	C	D				
LPV DA	390-7 ⁸ / ₈		250 (300-7 ⁸ / ₈)					
LNAV/VNAV DA	549-1 ³ / ₈		409 (500-1 ³ / ₈)					
LNAV MDA	500-1		360 (400-1)					
CIRCLING	600-1	460 (500-1)	900-2 ¹ / ₄ 760 (800-2 ¹ / ₄)	900-2 ¹ / ₂ 760 (800-2 ¹ / ₂)				