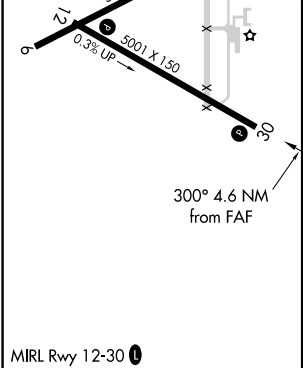
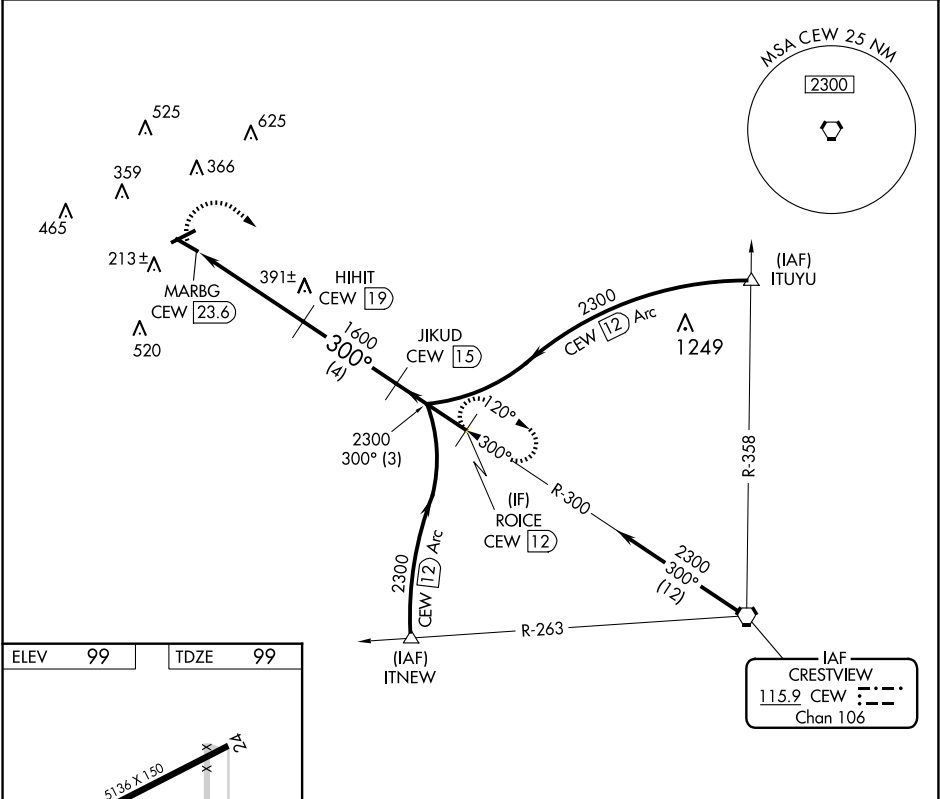


VORTAC CEW	APP CRS	Rwy Idg	5001
115.9	300°	TDZE	99
Chan 106		Apt Elev	99

VOR/DME RWY 30
BREWTON MUNI (12J)

▼ Visibility reduction by helicopters NA. When local altimeter setting not received use Pensacola altimeter setting; increase all MDA 100 feet, increase S-30 and Circling Cat C visibility ¼ SM and Circling Cat D visibility ½ SM.	MISSED APPROACH: Climbing right turn to 2300 via CEW VORTAC R-300 to ROICE/CEW 12 DME and hold.
--	---

AWOS-3PT 119.325	PENSACOLA APP CON 127.35 291.625	UNICOM 122.725 (CTAF) 0
---------------------	-------------------------------------	----------------------------



2300 CEW R-300	ROICE CEW 12	VGSi and descent angles not coincident (VGSi Angle 3.50/TCH 42).		JIKUD CEW 15	ROICE CEW 12
MARBG CEW 23.6		HIHIT CEW 19	300°	300°	2300
1600		3.02° TCH 37	4.6 NM	4 NM	3 NM
Procedure Turn NA					
CATEGORY	A	B	C	D	
S-30	660-1 561 (600-1)	660-1½ 561 (600-1½)	660-1½ 561 (600-1½)	660-1¾ 561 (600-1¾)	
CIRCLING	660-1 561 (600-1)	680-1½ 581 (600-1½)	700-1¾ 601 (700-1¾)	880-2½ 781 (800-2½)	

SE-4, 10 JUL 2025 to 07 AUG 2025

SE-4, 10 JUL 2025 to 07 AUG 2025