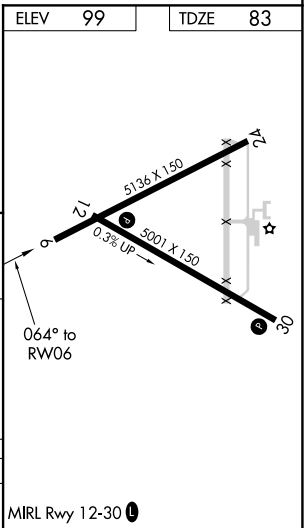
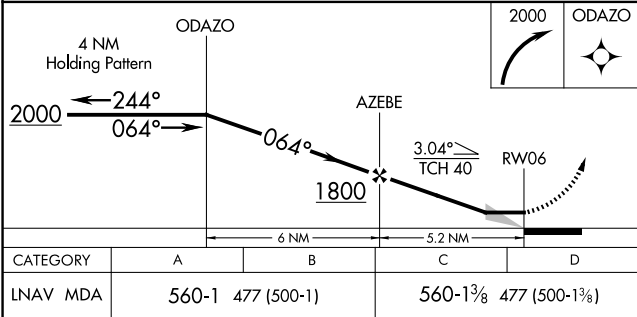
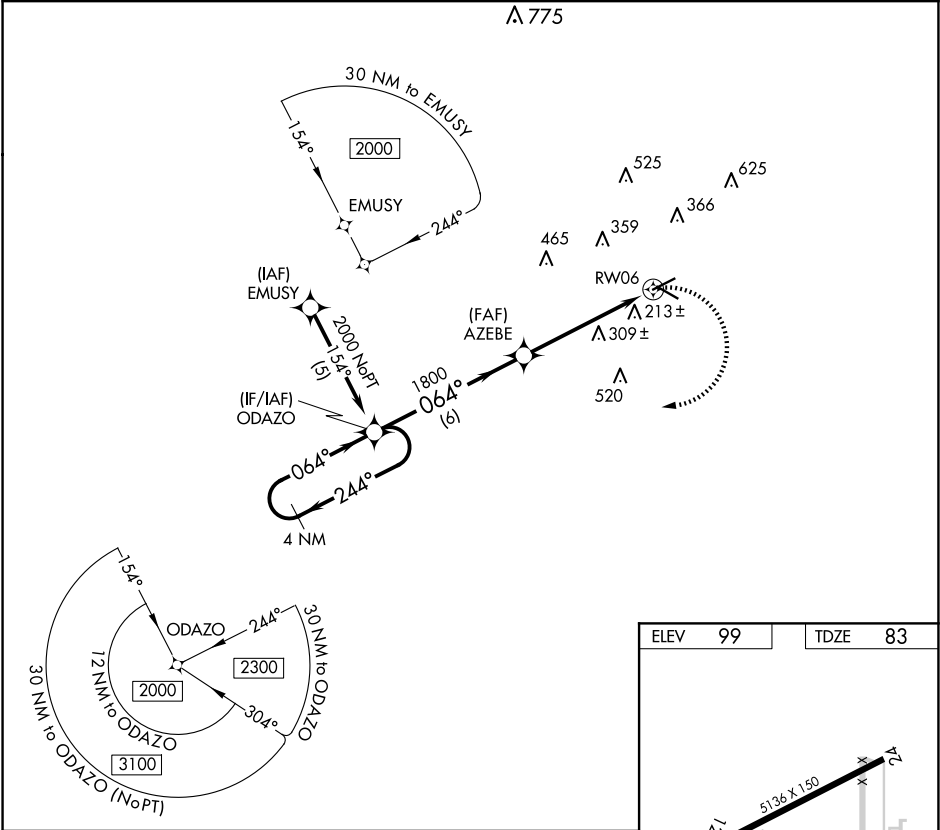


APP CRS	Rwy Idg	5136
064°	TDZE	83
	Apt Elev	99

RNAV (GPS) RWY 6
BREWTON MUNI (12J)

RNP APCH.	MISSED APPROACH: Climbing right turn to 2000 direct ODAZO and hold.
When local altimeter setting not received, use Pensacola altimeter setting and increase all MDA 100 feet; increase LNAV Cats C and D visibility ¼ SM. Procedure NA at night.	

AWOS-3PT 119.325	PENSACOLA APP CON 127.35 291.625	UNICOM 122.725 (CTAF) 0
---------------------	-------------------------------------	----------------------------



SE-4, 10 JUL 2025 to 07 AUG 2025

SE-4, 10 JUL 2025 to 07 AUG 2025