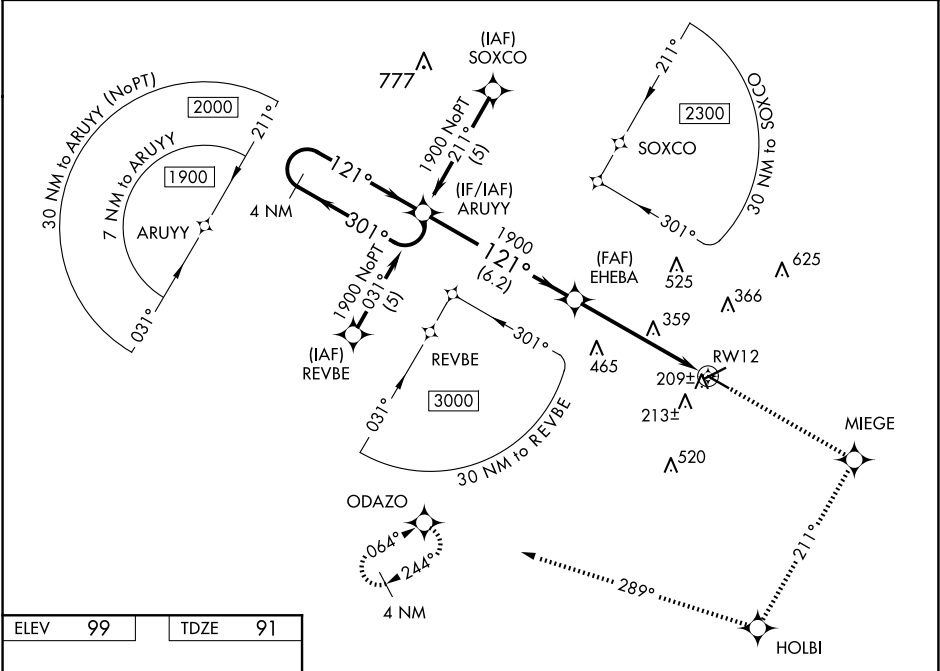


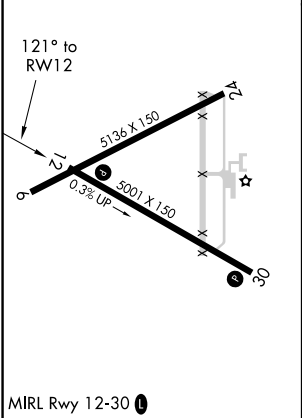
WAAS CH <b>53416</b> <b>W12A</b>	APP CRS <b>121°</b>	Rwy Idg TDZE Apt Elev	<b>5001</b> <b>91</b> <b>99</b>
--	------------------------	-----------------------------	---------------------------------------

RNAV (GPS) RWY 12  
BREWTON MUNI(12J)

RNP APCH. Baro-VNAV NA when using Pensacola altimeter setting. For uncompensated Baro-VNAV systems, LNAV/VNAV NA below -15°C or above 48°C. When local altimeter setting not received, use Pensacola altimeter setting; increase LPV DA to 425 feet; increase LNAV/VNAV DA to 563 feet; increase all MDAs 100 feet and LPV visibility all Cats, LNAV/VNAV visibility all Cats and LNAV Cats C and D ¼ SM. VDP NA when using Pensacola altimeter setting.		MISSED APPROACH: Climb to 2000 direct MIEGE and right turn on track 211° to HOLBI and on track 289° to ODAZO and hold.
AWOS-3PT <b>119.325</b>	PENSACOLA APP CON <b>127.35 291.625</b>	UNICOM <b>122.725 (CTAF)</b>



ELEV 99	TDZE 91
---------	---------



VGSI and RNAV glidepath not coincident (VGSI Angle 3.25/TCH 48).		2000	MIEGE	HOLBI	tr 289°	ODAZO
4 NM Holding Pattern ARUYU						
1900 301° 121° 1900						
GP 3.00° TCH 46						
6.2 NM 3.9 NM 1.6 NM						
CATEGORY	A	B	C	D		
LPV DA	341-1		250 (300-1)			
LNAV/VNAV DA	479-1½		388 (400-1½)			
LNAV MDA	640-1 549 (600-1)		640-1½ 549 (600-1½)			