

APP CRS
346°

Rwy Idg
3503

TDZE
665

Apt Elev
665

RNAV (GPS) RWY 35

ONTONAGON COUNTY/SCHUSTER FLD (OGM)

RNP APCH - GPS.

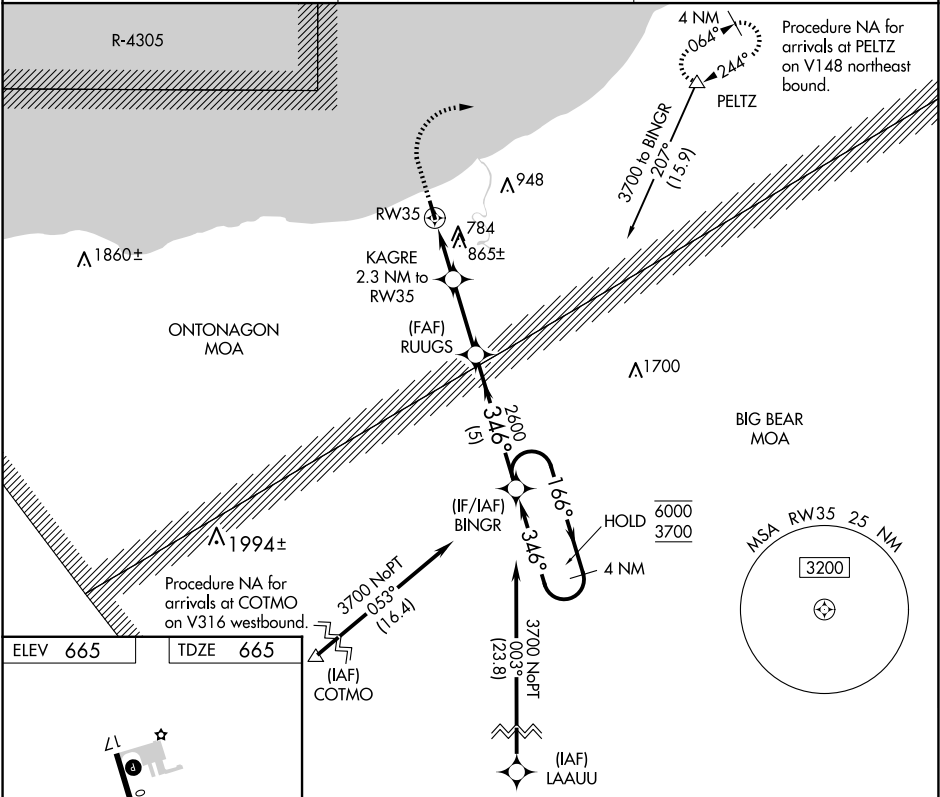
▼

▲ NA

Rwy 35 helicopter visibility reduction below 1 SM NA.
Procedure NA at night. Use CMX altimeter setting.

MISSED APPROACH: Climb to 1300 then climbing right turn to 3700 direct PELTZ and hold, continue climb-in-hold to 3700.

CMX ASOS 125.675	MINNEAPOLIS CENTER 133.55 379.1	CTAF 122.9 0
----------------------------	---	------------------------



ELEV 665

TDZE 665

1300

3700

PELTZ

VGSI and descent angles not coincident (VGSI Angle 3.50/TCH 25).

4 NM Holding Pattern

RW35

KAGRE 2.3 NM to RW35

(IF/IAF) BINGR

(IAF) COTMO

(IAF) LAAUU

1560

1600

166°

346°

3700

6000

346°

2600

346°

166°

346°

3700

6000

2.3 NM

2.8 NM

5 NM

CATEGORY	A	B	C	D
LNAV MDA	1280-1	615 (700-1)	1280-1¾ 615 (700-1¾)	NA
CIRCLING	1320-1	655 (700-1)	1420-2¼ 755 (800-2¼)	NA