

WAAS  
CH **42810**  
**W05A**

APP CRS  
**045°**

Rwy Idg  
TDZE **35**  
Apt Elev **37**

**RNAV (GPS) RWY 5**  
WASHINGTON-WARREN (OCW)

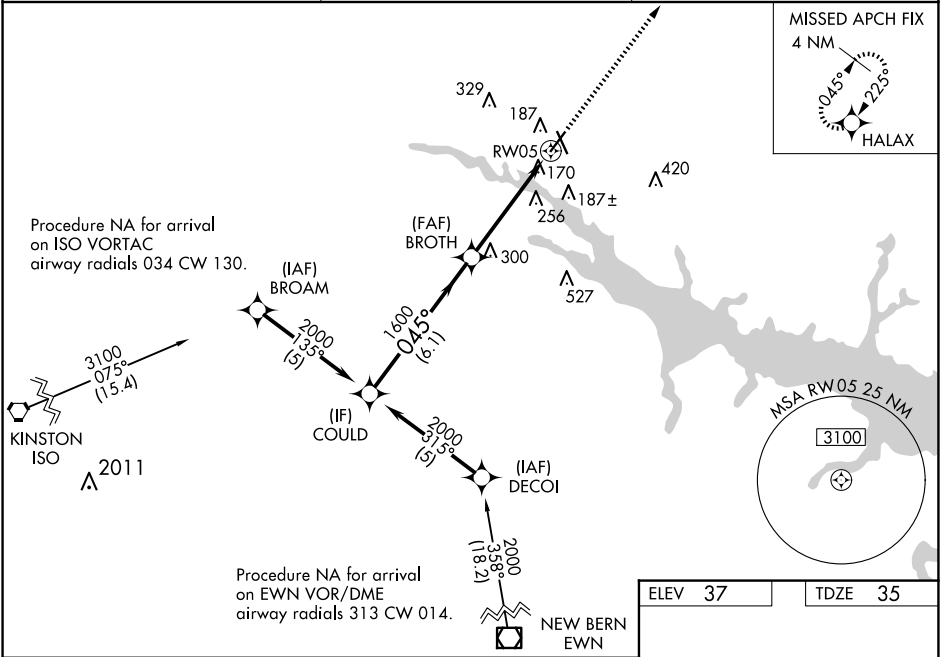
RNP APCH-GPS.

⚠

Circling Rwy 17 NA at night. Baro-VNAV and VDP NA when using Greenville altimeter setting. For uncompensated Baro-VNAV systems, LNAV/VNAV NA below -15°C or above 54°C. Rwy 5 helicopter visibility reduction below ¾ SM NA. When local altimeter setting not received, use Greenville altimeter setting: increase LPV DA to 484 feet and visibility ¼ SM, and LNAV/VNAV DA to 519 feet; increase all MDAs 60 feet and visibility LNAV Cat C/D ¼ SM.

MISSED APPROACH:  
Climb to 2600 direct HALAX and hold.

AWOS-3 <b>120.175</b>	CHERRY POINT APP CON <b>119.35 377.175</b>	UNICOM <b>122.7 (CTAF) 0</b>
--------------------------	---	---------------------------------



COULD

2000

045°

BROTH

1600

1.5 NM to RWY05

2600

HALAX

Procedure Turn NA

GP 3.00°

TCH 40

6.1 NM

3.2 NM

1.5

CATEGORY	A	B	C	D
LPV DA	442-1⅞		407 (500-1⅞)	
LNAV/VNAV DA	477-1⅜		442 (500-1⅜)	
LNAV MDA	560-1	525 (600-1)	560-1½	525 (600-1½)
CIRCLING	560-1	523 (600-1)	640-1¾ 603 (700-1¾)	780-2½ 743 (800-2½)

REIL Rwy 5 and 23 0

MIRL Rwy 5-23 0