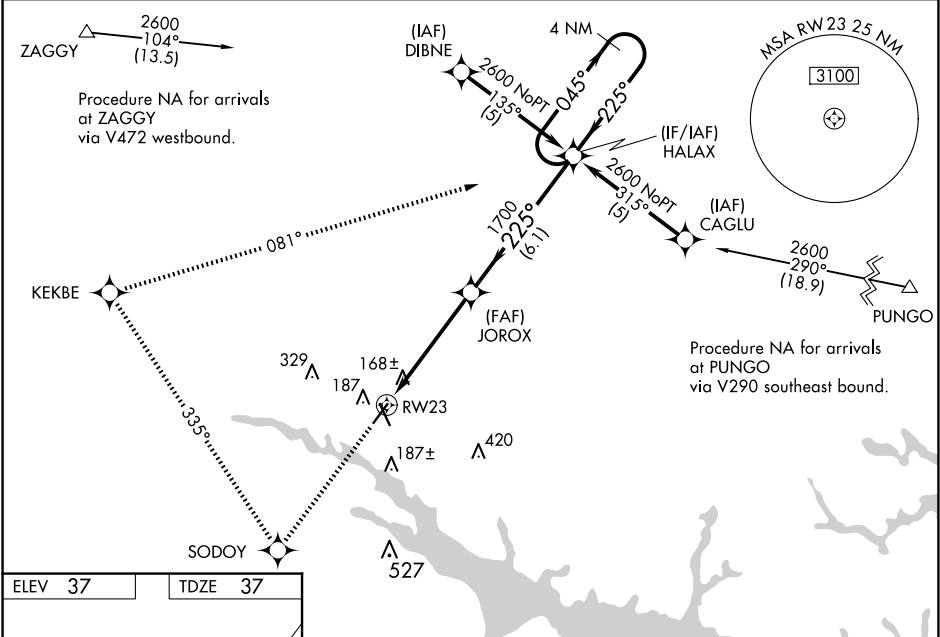


WAAS CH 93810 W23A	APP CRS 225°	Rwy Idg TDZE Apt Elev	4800 37 37
--	------------------------	-----------------------------	---------------------------------------

RNAV (GPS) RWY 23

WASHINGTON-WARREN (OCW)

RNP APCH-GPS.		MISSED APPROACH: Climb to 2600 direct SODOY and right turn via 335° track to KEKBE and right turn via 081° track to HALAX and hold.
<div>▼</div> <div>▲</div> Baro-VNAV and VDP NA when using Greenville altimeter setting. For uncompensated Baro-VNAV systems, LNAV/VNAV NA below -15°C or above 54°C. When local altimeter setting not received, use Greenville altimeter setting: increase LPV DA to 478 feet and visibility ¼ SM, and LNAV/VNAV DA to 515 feet and visibility ½ SM; increase all MDAs 60 feet and visibility LNAV Cat C/D ¼ SM. Circling Rwy 17 NA at night.		
AWOS-3 120.175	CHERRY POINT APP CON 119.35 377.175	UNICOM 122.7 (CTAF) 0



2600 ↑	SODOY ✧	KEKBE tr 335°	HALAX tr 081°	VGSI and RNAV glidepath not coincident (VGSI Angle 3.75/TCH 45). 4 NM Holding Pattern
<div><div>JOROX 1700</div><div>0.9 NM to RW23</div><div>0.9</div><div>4.2 NM</div><div>6.1 NM</div><div>045°→</div><div>←225°</div><div>2600</div><div>GP 3.00° TCH 40</div></div>				
CATEGORY	A	B	C	D
LPV DA	436-1⅛ 399 (400-1⅛)			
LNAV/ VNAV DA	473-1¼ 436 (500-1¼)			
LNAV MDA	420-1	383 (400-1)	420-1⅛	383 (400-1⅛)
CIRCLING	540-1	503 (600-1)	640-1¾ 603 (700-1¾)	780-2½ 743 (800-2½)