

LOC/DME I-OCW

**110.9**

Chan **46**

APP CRS

**045°**

Rwy Idg

**5000**

TDZE

**35**

Apt Elev

**37**

LOC RWY 5

WASHINGTON-WARREN (OCW)

ADF required.

▼

NA

Circling Rwy 17 NA at night. When local altimeter setting not received, use Greenville altimeter setting and increase all MDAs 60 feet. Rwy 5 helicopter visibility reduction below ¾ SM NA.

MISSED APPROACH: Climb to 1000, then climbing right turn to 1600 direct RNW NDB and hold.

AWOS-3

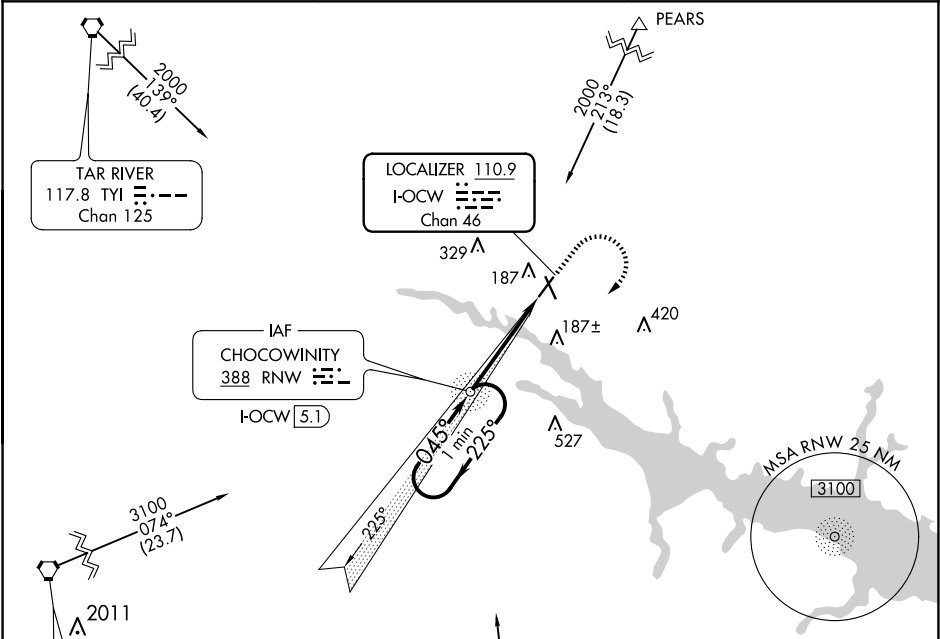
**120.175**

CHERRY POINT APP CON

**119.35 377.175**

UNICOM

**122.7 (CTAF) 0**



ELEV 37

TDZE 35

Missed approach diagram details: 1000, 1600, RNW, 045° X 100, 045° X 75, 045° 4.2 NM from FAF.

VGSI and descent angles not coincident (VGSI Angle 3.00/TCH 46).

One Minute Holding Pattern

RNW NDB I-OCW 5.1

1600

225°

045°

3.41°

TCH 46

2.9 NM

1.3

I-OCW 2.1

I-OCW 0.9

CATEGORY	A	B	C	D
S-5	480-1	445 (500-1)	480-1¾	445 (500-1¾)
CIRCLING	540-1	503 (600-1)	640-1¾ 603 (700-1¾)	780-2½ 743 (800-2½)

REIL Rwy 5 and 23 0

MIRL Rwys 5-23 0

FAF to MAP 4.2 NM

Knots	60	90	120	150	180
Min:Sec	4:12	2:48	2:06	1:41	1:24