

▼

NA

DME/DME RNP-0.3 NA. Helicopter visibility reduction below 1 SM NA. Obtain local altimeter setting on CTAF; when not received, use Tupelo altimeter setting and increase all MDAs 120 feet, increase LNAV visibility Cat B ¼ SM, Cat C, D ½ SM and Circling visibility Cat A, C, D ¼ SM. Rwy 18 Straight-in and Circling minimums NA at night.

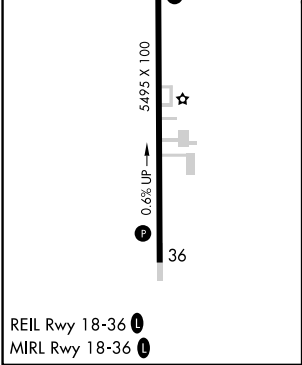
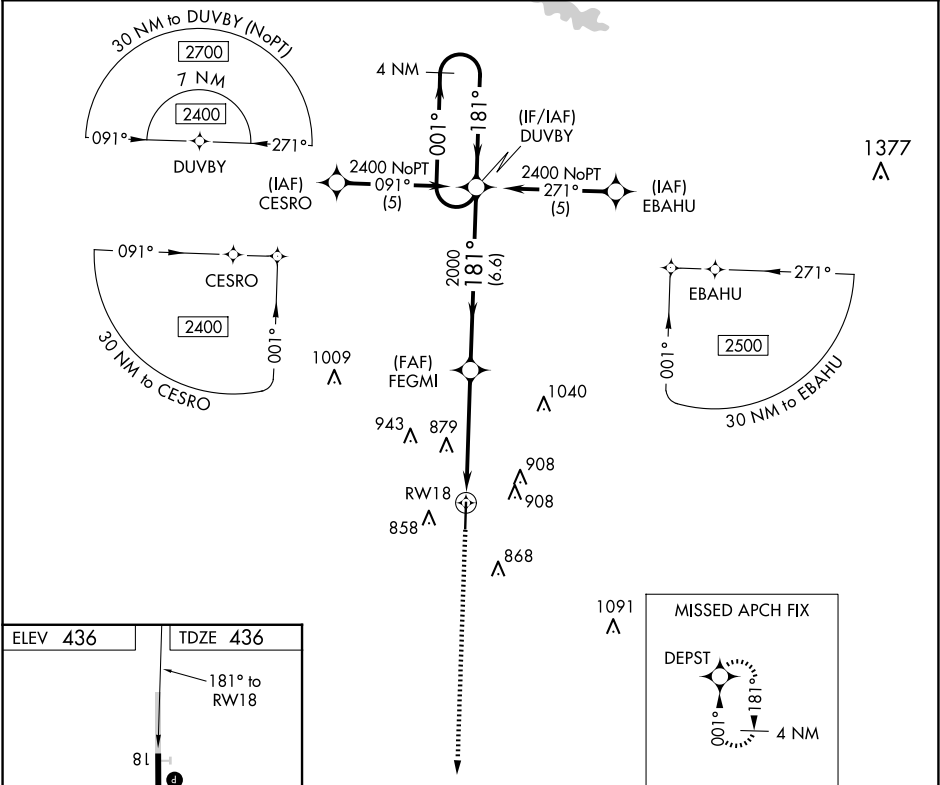
MISSED APPROACH:
Climb to 2400 direct DEPST and hold.

MEMPHIS CENTER

127.1 269.4

UNICOM

122.8 (CTAF) 0



REIL Rwy 18-36	1
MIRL Rwy 18-36	1

CATEGORY	A	B	C	D
LNAV MDA	1140-1	704 (800-1)	1140-2 704 (800-2)	1140-2½ 704 (800-2½)
CIRCLING	1220-1 784 (800-1)	1260-1¼ 824 (900-1¼)	1260-2½ 824 (900-2½)	1260-2¾ 824 (900-2¾)

HAMILTON, ALABAMA

Orig-D 14JUL22

MARION COUNTY-RANKIN FITE (HAB)

RNAV (GPS) RWY 18