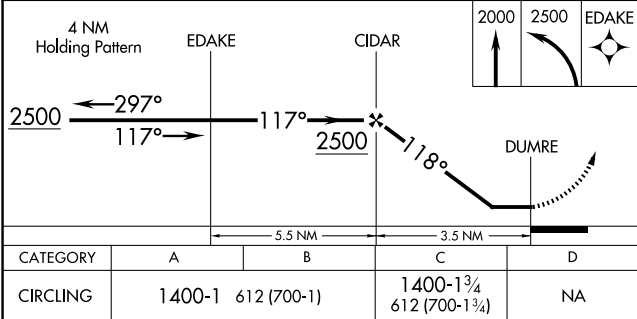
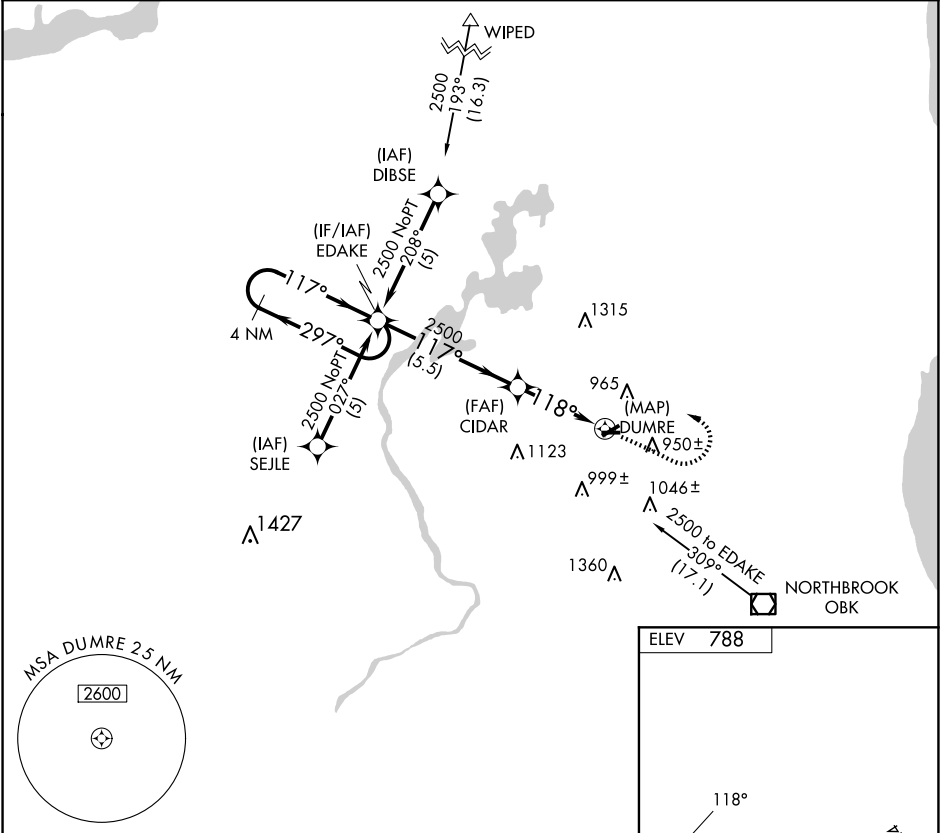


APP CRS	Rwy Idg	N/A
118°	TDZE	N/A
	Apt Elev	788

RNAV (GPS)-B

CAMPBELL (C81)

<div><div><div></div><div>NA</div></div><div>Use Chicago O'Hare altimeter setting. GPS or RNP-0.3 required. DME/DME RNP-0.3 NA.</div></div>	MISSED APPROACH: Climb to 2000, then climbing left turn to 2500 direct EDAKE WP and hold.
CHICAGO APP CON 120.55 306.925	UNICOM 122.7 (CTAF)



ELEV 788			
CATEGORY	A	B	C
CIRCLING	1400-1 612 (700-1)	1400-1 3/4 612 (700-1 3/4)	NA