
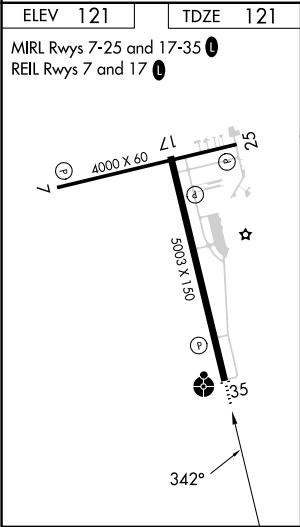
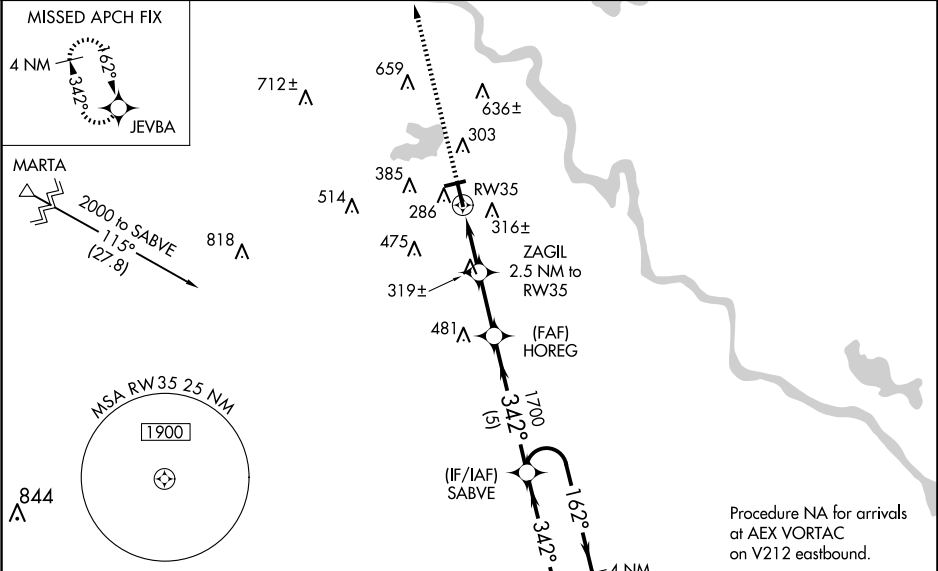


WAAS CH 86510 W35A	APP CRS 342°	Rwy Idg 5003 TDZE 121 Apt Elev 121
--	------------------------	---

RNAV (GPS) RWY 35

NATCHITOCHES RGNL (I&R)

RNP APCH.			<div>ODALS</div> <div></div>	MISSED APPROACH: Climb to 2000 direct JEVBA and hold.
<div><div><div>▼</div><div>▲</div></div><div>Inop table does not apply to LPV all Cats, and LNAV Cats A and B. Baro-VNAV NA when using Alexandria Intl altimeter setting. For uncompensated Baro-VNAV systems, LNAV/VNAV NA below -15°C or above 54°C. Helicopter visibility reduction below ¾ SM NA. When local altimeter setting not received, use Alexandria Intl altimeter setting: Increase LPV DA to 462 feet; increase LNAV/VNAV DA to 577 feet and visibility all Cats ¼ SM; increase all MDA 100 feet and LNAV Cat C visibility ¼ SM and Circling Cat C visibility ½ SM. For inoperative ODALS, increase LNAV/VNAV all Cats visibility ½ mile.</div></div>				
AWOS-3 119.025	POLK APP CON 125.4 302.2	GCO 135.075	UNICOM 122.8 (CTAF) 0	



--	--	--	--	--