

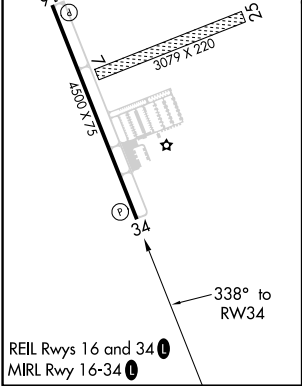
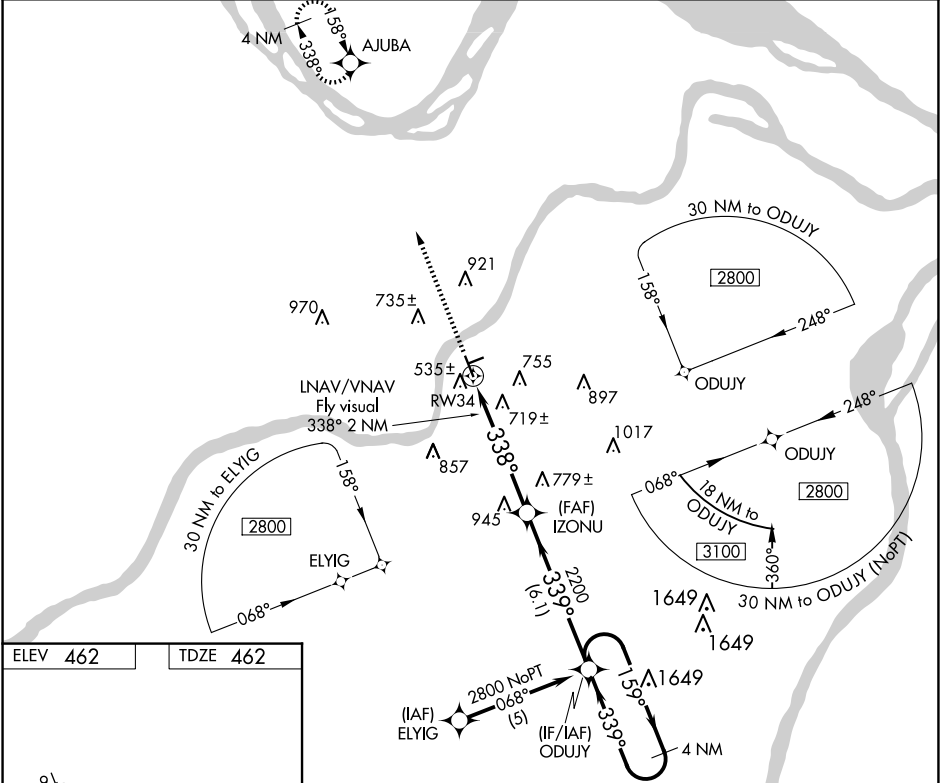
WAAS CH <b>93905</b> <b>W34A</b>	APP CRS <b>338°</b>	Rwy Idg TDZE <b>462</b> Apt Elev <b>462</b>
--	------------------------	---

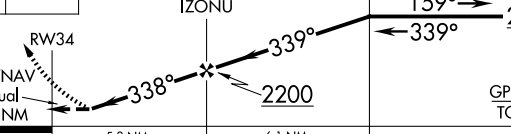
RNAV (GPS) RWY 34

CREVE COEUR (1H0)

RNP APCH.	MISSED APPROACH: Climb to 2700 direct AJUBA and hold.
▼ ▲ NA	Use St Louis Lambert Intl altimeter setting. Baro-VNAV NA. Circling Rwy 16 NA at night. Circling NA to Rwy 7 and 25. Rwy 34 helicopter visibility reduction below ¾ SM NA.

ST. LOUIS APP CON <b>126.5 254.3</b>	UNICOM <b>122.8 (CTAF) 0</b>
---	---------------------------------



2700	AJUBA	VGSI and RNAV glidepath not coincident. (VGSI Angle 3.00/TCH 43).		4 NM Holding Pattern	
↑	✦				
					
CATEGORY		A	B	C	D
LPV DA		809-1¼ 347 (400-1¼)		NA	
LNAV/VNAV DA		1131-2 669 (700-2)		NA	
LNAV MDA		1080-1 618 (700-1)		NA	
CIRCLING		1080-1 618 (700-1)	1120-1 658 (700-1)	NA	