

WAAS CH 62805 W35A	APP CRS 350°	Rwy Idg 5000 TDZE 756 Apt Elev 763
--	------------------------	---

RNAV (GPS) RWY 35
HURON COUNTY MEML (BAX)

RNP APCH.

⚠ For uncompensated Baro-VNAV systems, LNAV/VNAV NA below -16°C or above 54°C. When local altimeter setting not received, use MBS Intl altimeter setting and increase all DA 129 feet and all MDA 140 feet; increase LPV all Cats and LNAV Cat C visibility $\frac{3}{8}$ mile. Rwy 35 helicopter visibility reduction below $\frac{3}{4}$ SM NA. VDP and Baro/VNAV NA when using MBS Intl altimeter setting.

MISSED APPROACH: Climb to 3000
direct ELARE and hold.

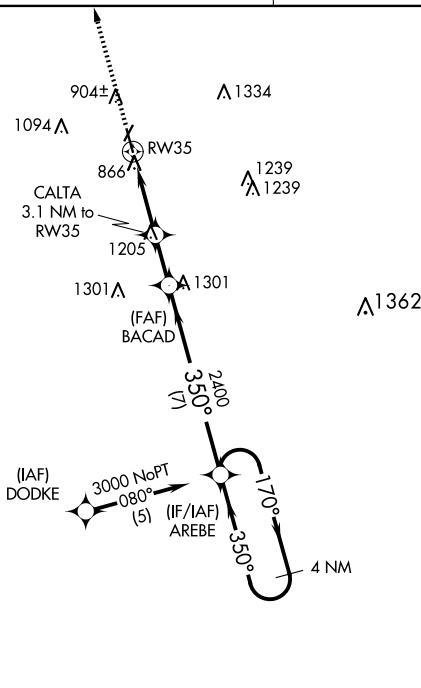
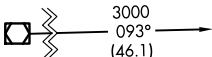
AWOS-3 118.6	CLEVELAND CENTER 127.7 290.425	UNICOM 123.075 (CTAF) 0
------------------------	--	-----------------------------------

MISSED APRCH FIX

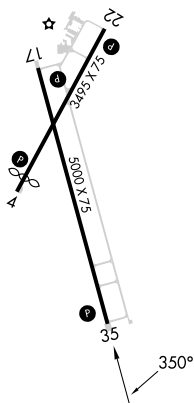


Procedure NA for arrivals
at MBS VOR/DME on
V320 northwest bound.

SAGINAW
MBS



ELEV 763		TDZE 756
----------	--	----------



REIL Rwy 17 and 35 **L**
MIRL Rwy 4-22 and 17-35 **L**

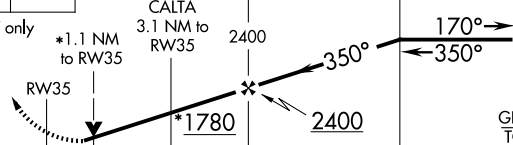
BAD AXE, MICHIGAN

Orig-C 18JUL19

43°47'N-82°59'W

HURON COUNTY MEML (BAX)
RNAV (GPS) RWY 35

EC-1, 10 JUL 2025 to 07 AUG 2025

3000 ↑ *LNAV only		ELARE ✦ *1.1 NM to RW35		VGSI and RNAV glidepath not coincident (VGSI Angle 3.00/TCH 41).			4 NM Holding Pattern AREBE	
		CALTA 3.1 NM to RW35		BACAD 2400		3000		
RW35		*1780		2400		GP 3.00° TCH 40		
1.1 NM		2 NM		1.9 NM		7 NM		
CATEGORY		A		B		C		
LPV DA		1113-1¼ 357 (400-1¼)				NA		
LNAV/ VNAV DA		1154-1½ 398 (400-1½)				NA		
LNAV MDA		1520-1 764 (800-1)	1520-1¼ 764 (800-1¼)	1520-2½ 764 (800-2½)		NA		