

APP CRS  
**213°**

Rwy ldg  
TDZE  
**763**

Apt Elev  
**763**

**RNAV (GPS) RWY 22**

HURON COUNTY MEML (BAX)

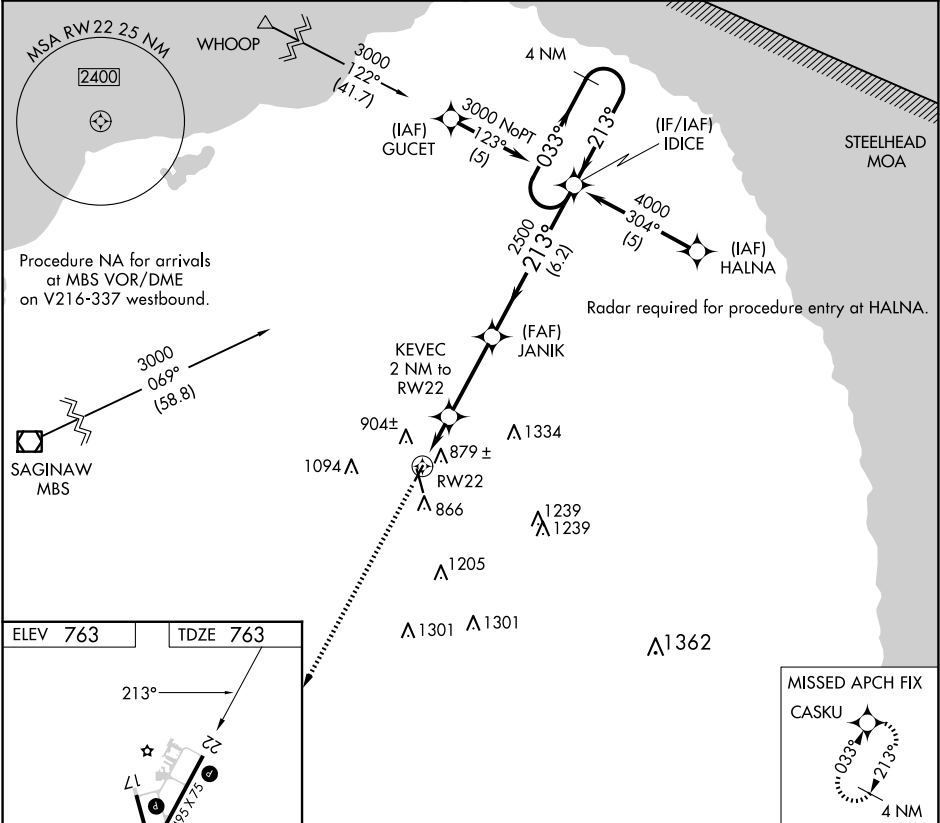
RNP APCH.

▼

When local altimeter setting not received, use MBS Intl altimeter setting and increase all MDA 140 feet; increase LNAV Cat C visibility ½ SM. Procedure NA at night. Rwy 22 helicopter visibility reduction below 1 SM NA.

MISSED APPROACH: Climb to 3000 direct CASKU and hold.

AWOS-3 <b>118.6</b>	CLEVELAND CENTER <b>127.7 290.425</b>	UNICOM <b>123.075 (CTAF) 0</b>
------------------------	--	-----------------------------------



ELEV 763

TDZE 763

213°

3495±75

5000±75

35

3000

CASKU

Visual Segment - Obstacles.

IDICE

4 NM Holding Pattern

RW22

KEVEC 2 NM to RW22

JANIK

2500

1440

2 NM

3.3 NM

6.2 NM

CATEGORY	A	B	C	D
LNAV MDA	1140-1	377 (400-1)		NA