

WAAS CH <b>69205</b> <b>W17A</b>	APP CRS <b>170°</b>	Rwy Idg TDZE <b>763</b> Apt Elev <b>763</b>
--	------------------------	---

RNAV (GPS) RWY 17

HURON COUNTY MEML (BAX)

RNP APCH.

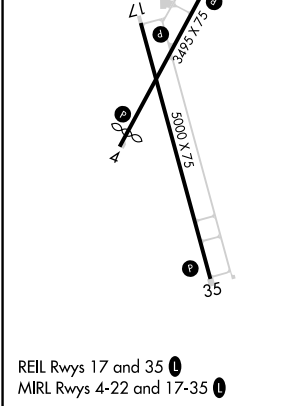
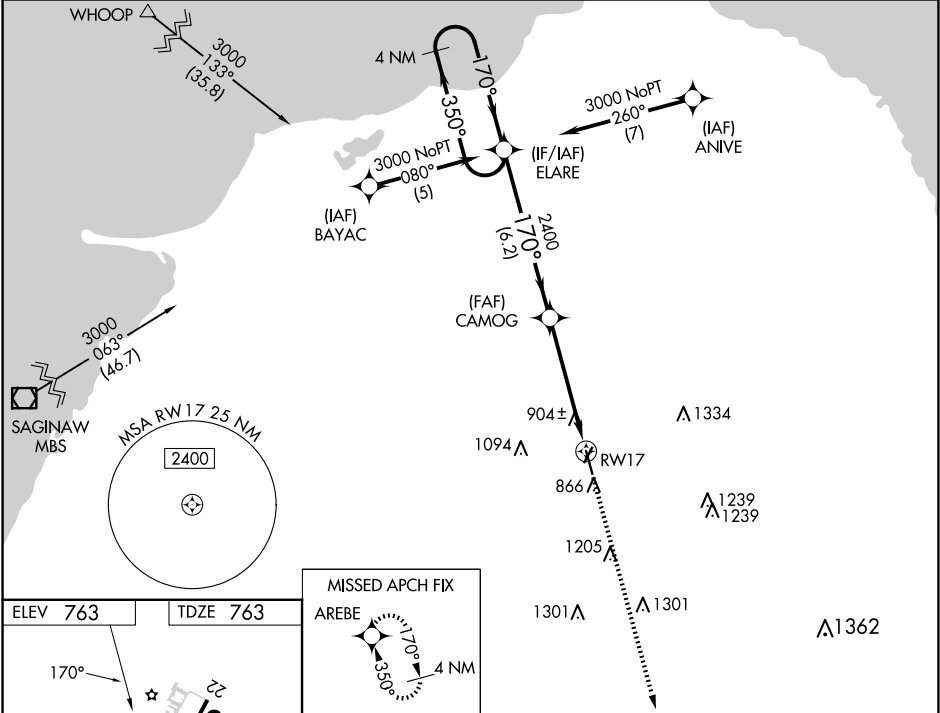
▼

▲

Baro-VNAV NA when using MBS Intl altimeter setting. For uncompensated Baro-VNAV systems, LNAV/VNAV NA below -16°C or above 54°C. When local altimeter setting not received, use MBS Intl altimeter setting and increase all DA 129 feet and all MDA 140 feet, increase LPV all Cats visibility ¾ mile; increase LNAV Cat C ½ mile. Rwy 17 helicopter visibility reduction below ¾ SM NA.

MISSED APPROACH:  
Climb to 3000 direct AREBE and hold.

AWOS-3 <b>118.6</b>	CLEVELAND CENTER <b>127.7 290.425</b>	UNICOM <b>123.075 (CTAF) 0</b>
------------------------	--	-----------------------------------



<div>4 NM Holding Pattern</div> <div>← 350° 170° →</div> <div>GP 3.00° TCH 40</div>		<div>ELARE</div> <div>170°</div> <div>2400</div> <div>6.2 NM</div>	<div>CAMOG</div> <div>2400</div> <div>4.9 NM</div>	<div>3000</div> <div>AREBE</div> <div>RW17</div>
CATEGORY	A	B	C	D
LPV DA	1075-1 312 (400-1)			NA
LNAV/ VNAV DA	1352-2 589 (600-2)			NA
LNAV MDA	1220-1 457 (500-1)	1220-1¼ 457 (500-1¼)		NA