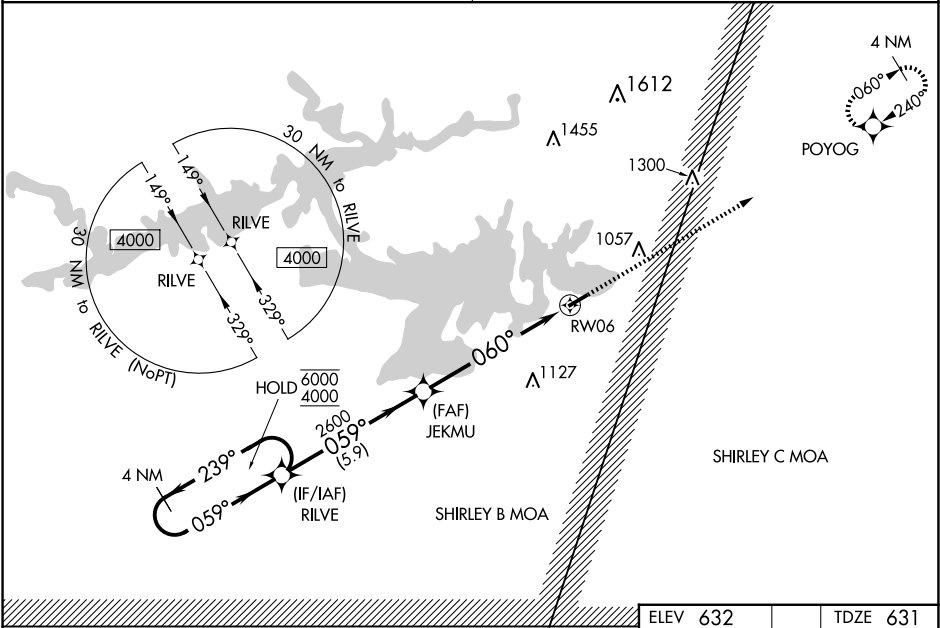


APP CRS	Rwy Idg	4002
060°	TDZE	631
	Apt Elev	632

RNAV (GPS) RWY 6
HEBER SPRINGS MUNI (HBZ)

RNP APCH.	Procedure NA at night. Rwy 6 helicopter visibility reduction below 1 SM NA. Obtain local altimeter setting on CTAF; when not received, use Batesville altimeter setting and increase all MDAs 80 feet, and increase LNAV visibility Cat C and D ¼ SM. Increase Circling visibility Cat C ¼ SM, Cat D ½ SM.	MISSED APPROACH: Climb to 4000 direct POYOG and hold, continue climb-in hold 4000.
-----------	--	--

MEMPHIS CENTER 126.85 281.55	UNICOM 122.7 (CTAF) 0
---------------------------------	--------------------------



ELEV 632	TDZE 631
----------	----------

4 NM Holding Pattern RILVE 6000 ← 239° 4000 → 059° JEKMU 2600 060° RW06 3.00° TCH 36 5.9 NM 6.1 NM				4000 POYOG ↑ ★
CATEGORY	A	B	C	D
LNAV MDA	1240-1	609 (700-1)	1240-1¾	609 (700-1¾)
CIRCLING	1240-1 608 (700-1)	1380-1 748 (800-1)	1380-2¼ 748 (800-2¼)	1440-2½ 808 (900-2½)
HEBER SPRINGS, ARKANSAS Amdt 1 10OCT19				MIRL Rwy 6-24 0 REIL Rws 6 and 24 0

SC-1, 10 JUL 2025 to 07 AUG 2025

SC-1, 10 JUL 2025 to 07 AUG 2025