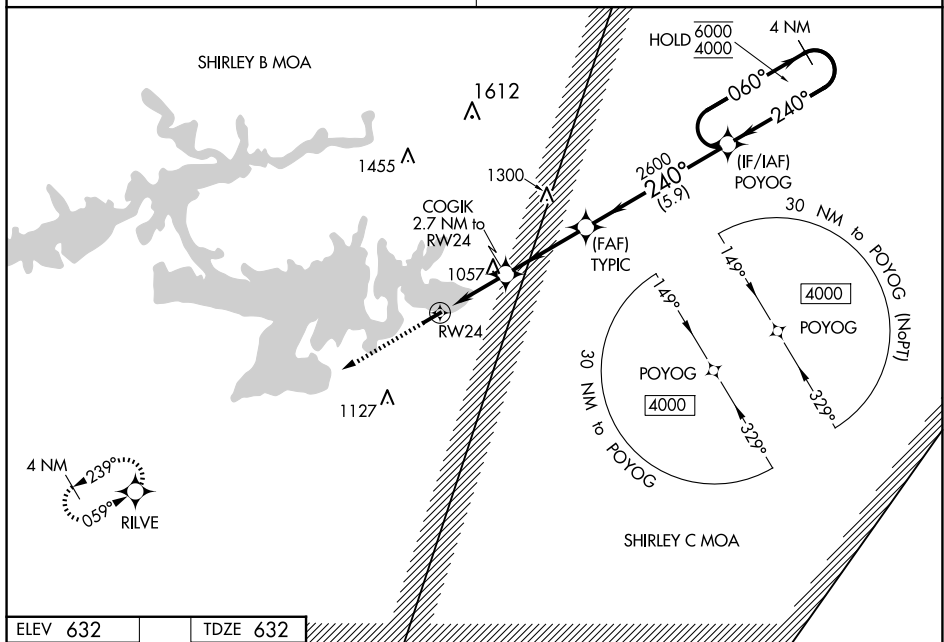


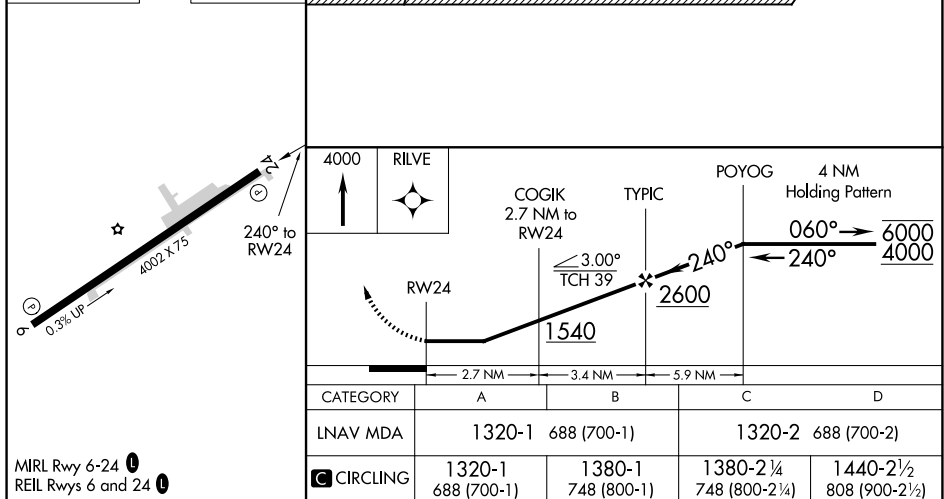
**RNAV (GPS) RWY 24**  
HEBER SPRINGS MUNI (HBZ)

Procedure NA at night. Rwy 24 helicopter visibility reduction below 1 SM NA. Obtain local altimeter setting on CTAF; when not received, use Batesville altimeter setting and increase all MDAs 80 feet; and increase LNAV visibility Cat B  $\frac{1}{4}$  SM, Cat C and D  $\frac{1}{2}$  SM. Increase Circling visibility Cat B, C  $\frac{1}{4}$  SM, and Cat D  $\frac{1}{2}$  SM.

**MISSED APPROACH:** Climb to 4000 direct RILVE and hold, continue climb-in-hold to 4000.

UNICOM  
122.7 (CTAF) **L**

TDZE 632



HEBER SPRINGS MUNI (HBZ)  
RNAV (GPS) RWY 24