


PORT LAVACA, TEXAS

AL-5904 (FAA)

23278

VORTAC PSX <b>117.3</b> Chan <b>120</b>	APP CRS <b>244°</b>	Rwy Idg TDZE Apt Elev <b>N/A</b> <b>N/A</b> <b>32</b>
---	------------------------	--

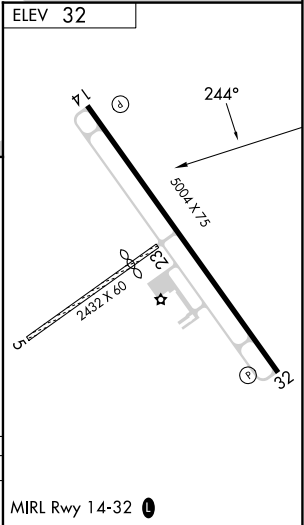
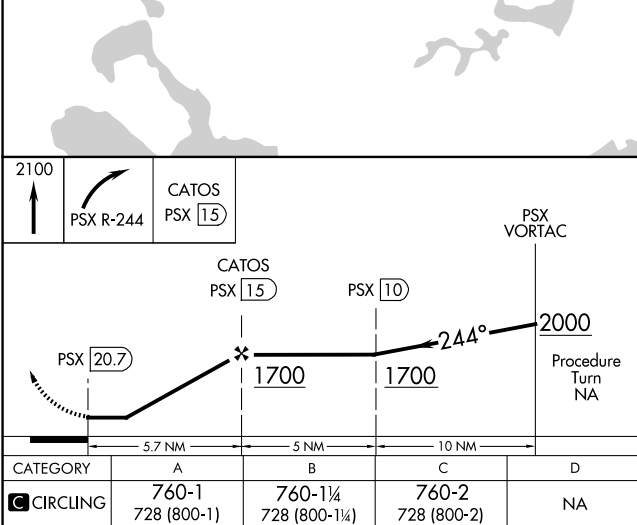
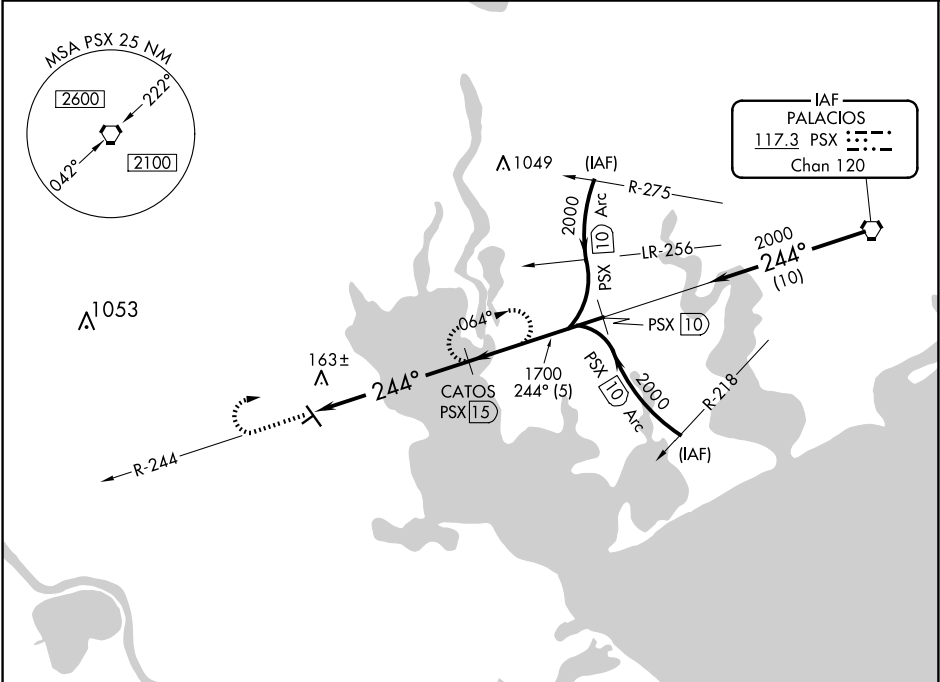
VOR/DME-A  
CALHOUN COUNTY (PKV)



When local altimeter setting not received, use Victoria altimeter setting. Circling NA to Rwys 5 and 23. Night landing: Rwy 32 NA.

MISSED APPROACH: Climb to 2100, then right turn via PSX VORTAC R-244 to CATOS/PSX 15 DME and hold.

AWOS-3 <b>118.275</b>	HOUSTON CENTER <b>135.05 353.6</b>	UNICOM <b>122.8</b> (CTAF) <b>0</b>
--------------------------	---------------------------------------	--



PORT LAVACA, TEXAS  
Amdt 4D 08OCT20

28°39'N-96°41'W

CALHOUN COUNTY (PKV)  
VOR/DME-A

SC-5, 10 JUL 2025 to 07 AUG 2025

SC-5, 10 JUL 2025 to 07 AUG 2025