

WAAS CH <b>53437</b> <b>W14A</b>	APP CRS <b>139°</b>	Rwy Idg TDZE <b>30</b> Apt Elev <b>32</b>	<b>5004</b>
--	------------------------	---	-------------

RNAV (GPS) RWY 14

CALHOUN COUNTY (PKV)

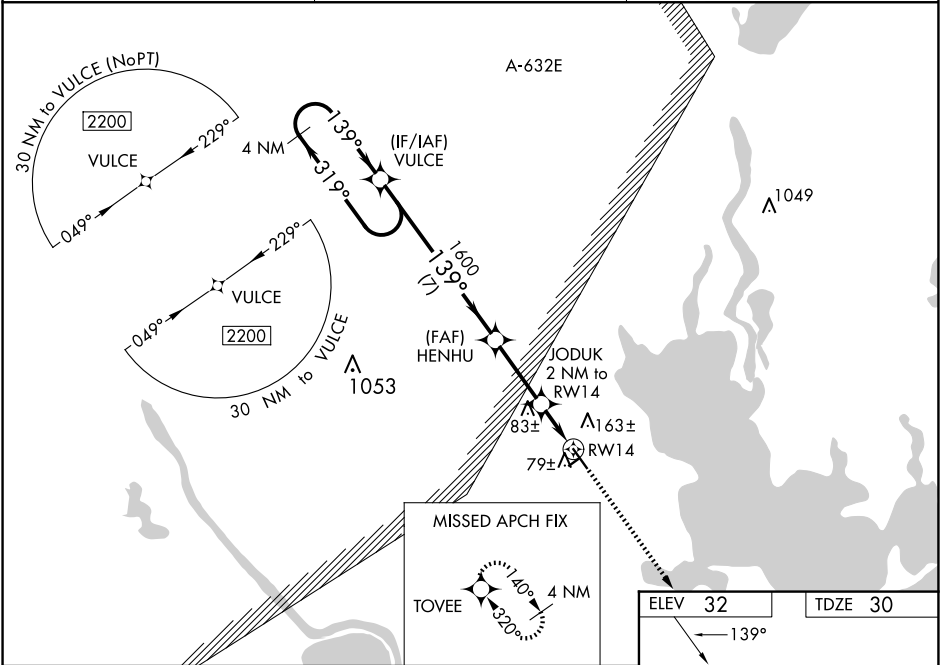
RNP APCH - GPS.

⚠

Baro-VNAV and VDP NA when using Victoria altimeter setting. For uncompensated Baro-VNAV systems, LNAV/VNAV NA below -15°C or above 54°C. When local altimeter setting not received, use Victoria altimeter setting and increase LPV DA and LNAV/VNAV DA to 331 feet and all visibilities 1/8 SM; increase all MDAs 60 feet and LNAV visibility Cat C 1/4 SM. Circling Rwy 32 NA at night. Circling NA to Rwys 5 and 23.

MISSED APPROACH:  
Climb to 2200 direct TOVEE and hold.

AWOS-3 <b>118.275</b>	HOUSTON CENTER <b>135.05 353.6</b>	UNICOM <b>122.8 (CTAF) 0</b>
--------------------------	---------------------------------------	---------------------------------



4 NM Holding Pattern		VULCE	HENHU	JODUK	TOVEE
2200		139°	1600	2 NM to RWY 14	3200
GP 3.00°		139°	1600	1.1 NM to RWY 14	
TCH 45°		139°	700	0.9 NM	
		7 NM	2.8 NM	0.9 NM	1.1 NM
CATEGORY	A	B	C	D	
LPV DA	280-3/4	250 (300-3/4)		NA	
LNAV/VNAV DA	280-3/4	250 (300-3/4)		NA	
LNAV MDA	440-1	410 (500-1)	440-1 1/8 410 (500-1 1/8)	NA	
CIRCLING	520-1	488 (500-1)	560-1 1/2 528 (600-1 1/2)	NA	

