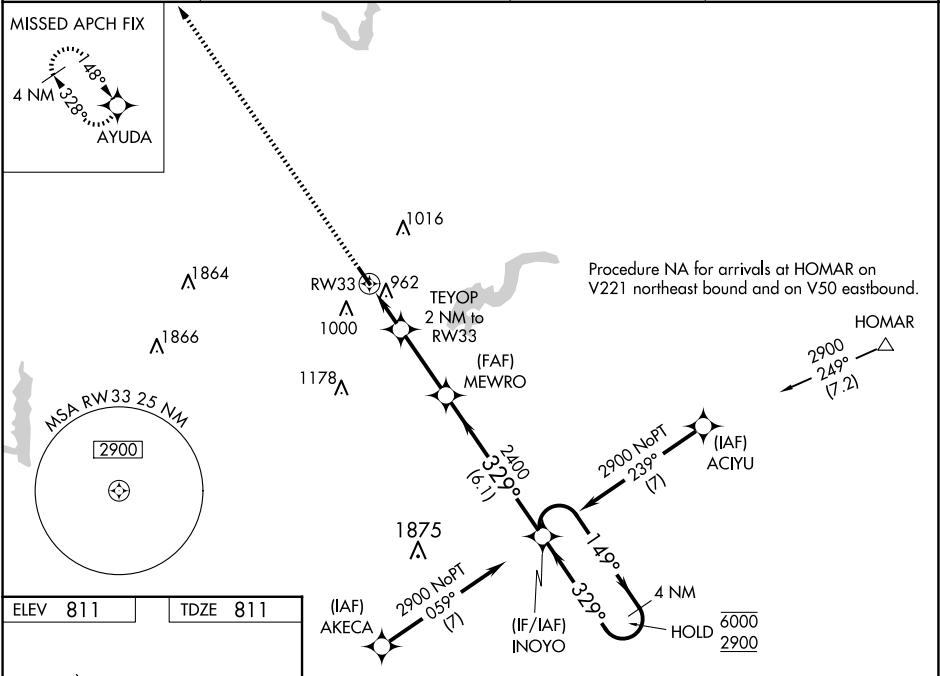


WAAS CH <b>40247</b> <b>W33A</b>	APP CRS <b>329°</b>	Rwy Ldg TDZE Apt Elev <b>4004</b> <b>811</b> <b>811</b>
--	------------------------	--

RNAV (GPS) RWY 33

INDIANAPOLIS METRO (UMP)

RNP APCH - GPS. <div><div></div><div>For uncompensated Baro-VNAV systems, LNAV/VNAV NA below -16°C or above 54°C. Rwy 33 helicopter visibility reduction below ¾ SM NA. Baro-VNAV and VDP NA when using IND altimeter setting. When local altimeter setting not received, use IND altimeter setting and increase LPV DA to 1117 feet; increase LNAV/VNAV DA to 1260 feet and all visibilities ¼ SM. Increase all MDAs 60 feet and LNAV visibility Cat C ¼ SM.</div></div>		MISSED APPROACH: Climb to 2500 direct AYUDA and hold.	
AWOS-3PT <b>119.375</b>	INDIANAPOLIS APP CON <b>127.15 317.8</b>	CLNC DEL <b>121.625</b>	UNICOM <b>123.0</b> (CTAF) <b>0</b>



2500 AYUDA		VGSI and RNAV glidepath not coincident (VGSI Angle 3.50/TCH 27).		4 NM Holding Pattern	
AYUDA		MEWRO		INOYO	
1 NM to RW33		2 NM to RW33		2 NM to RW33	
RW33		RW33		RW33	
1 NM		1 NM		2.9 NM	
1 NM		1 NM		6.1 NM	
CATEGORY		A		B	
LPV DA		1074-1		263 (300-1)	
LNAV/VNAV DA		1217-1½		406 (500-1½)	
LNAV MDA		1220-1		409 (500-1)	
CIRCLING		1320-1		1340-1	
		509 (600-1)		529 (600-1)	
				529 (600-1½)	
				NA	