

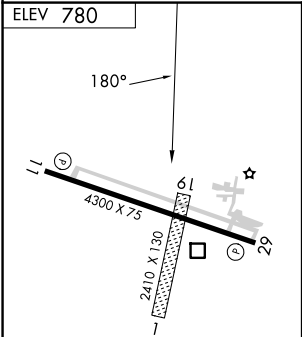
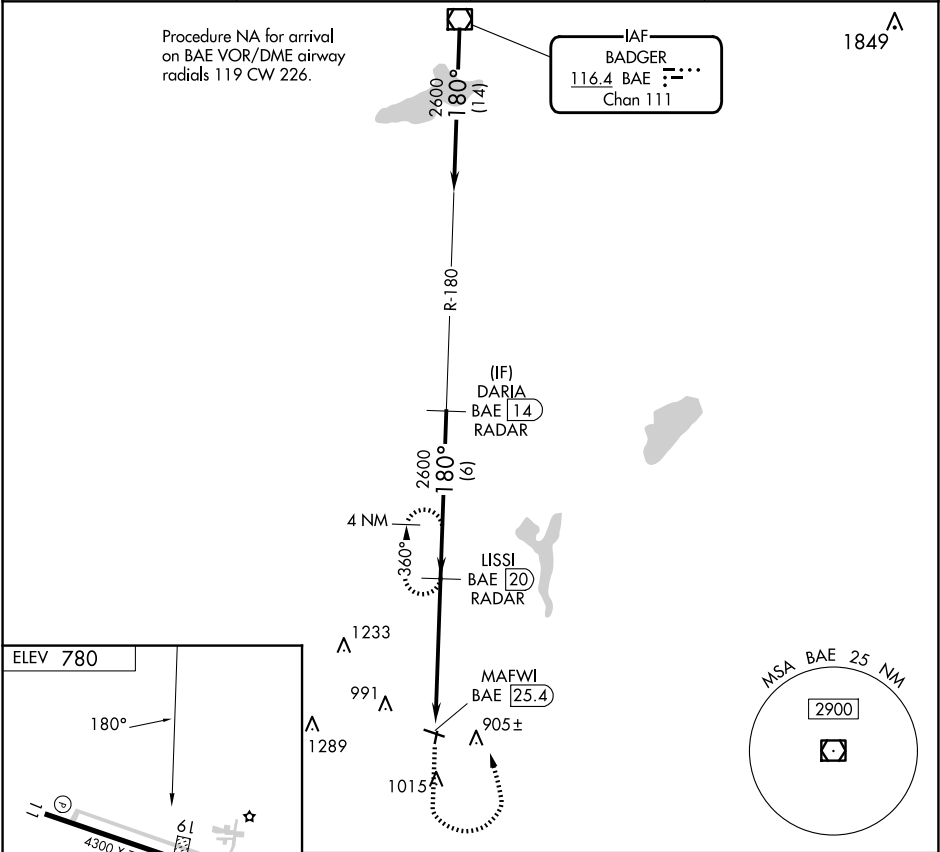
VOR/DME BAE	APP CRS	Rwy Idg	N/A
116.4	180°	TDZE	N/A
Chan 111		Apt Elev	780

VOR-A

BURLINGTON MUNI (BUU)

DME or RADAR required.	MISSED APPROACH: Climb to 2600 then left turn on BAE VOR/DME R-180 to LISSI/20 DME/RADAR and hold.
<div><div>▼</div><div>▲</div></div> Circling NA to Rwys 1 and 19.	

AWOS-3 125.275	MILWAUKEE APP CON 135.875 307.0	GCO 121.725	UNICOM 123.05 (CTAF) 0
--------------------------	---	-----------------------	---



MIRL Rwy 11-29 **0**
REIL Rwys 11 and 29 **0**

FAF to MAP 5.4 NM						CATEGORY	A	B	C	D
Knots	60	90	120	150	180	<div><div>■</div>CIRCLING</div>	1400-1	620 (700-1)	1400-1¾ 620 (700-1¾)	1560-2½ 780 (800-2½)
Min:Sec	5:24	3:36	2:42	2:10	1:48					

EC-3, 10 JUL 2025 to 07 AUG 2025

EC-3, 10 JUL 2025 to 07 AUG 2025