

VORTAC THX	APP CRS	Rwy Idg	4553
111.4	106°	TDZE	268
Chan 51		Apt Elev	273

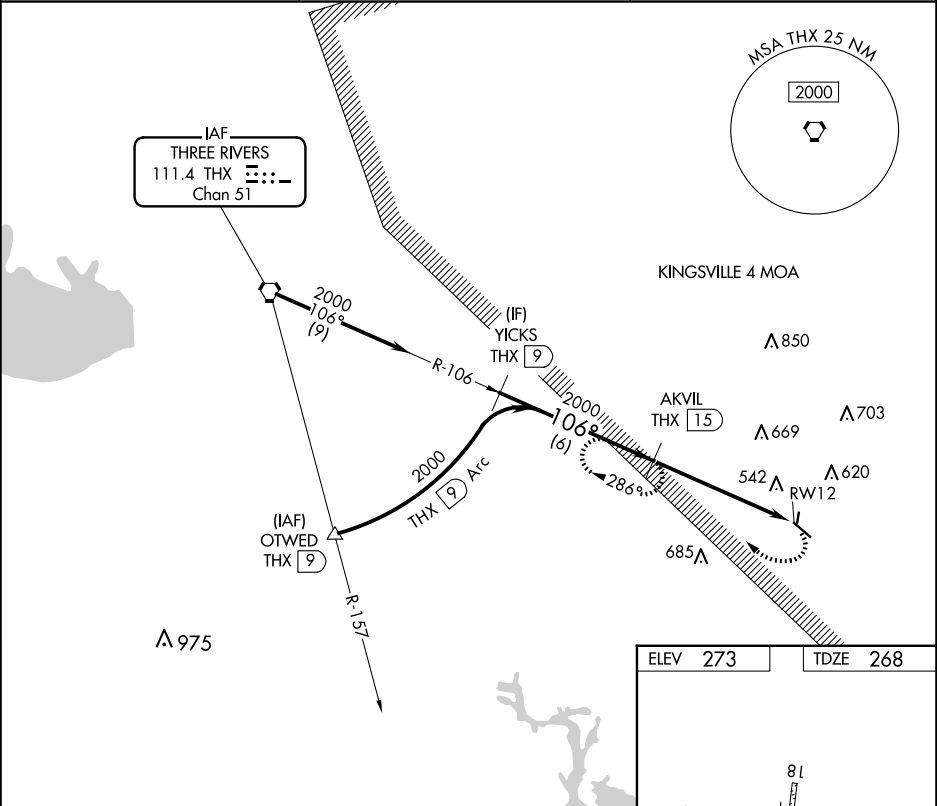
VOR/DME RWY 12
BEEVILLE MUNI (BEA)

NA

Use Corpus Christi Intl altimeter setting.
Circling NA to Rwys 18 and 36.

MISSED APPROACH: Climbing right turn to 2000 via THX VORTAC R-106 to AKVIL/THX VORTAC 15 DME and hold. Continue climb-in-hold to 2000.

AWOS-3 118.675	HOUSTON CENTER 134.6 322.5	UNICOM 122.8 (CTAF) 0
-------------------	-------------------------------	---------------------------------



Procedure Turn NA

YICKS THX [9]

AKVIL THX [15]

2000

106°

2000

VGSI and descent angles not coincident (VGSI Angle 3.00/TCH 20).

2.90° TCH 40

6 NM

5.5 NM

2000

AKVIL THX [15]

THX R-106

RW12 THX [20.5]

CATEGORY	A	B	C	D
S-12	1000-1 732 (800-1)	1000-1¼ 732 (800-1¼)	1000-2 732 (800-2)	NA
CIRCLING	1000-1 727 (800-1)	1020-1¼ 747 (800-1¼)	1120-2½ 847 (900-2½)	NA

ELEV 273

TDZE 268

MIRL Rwy 12-30 **0**

SC-3, 10 JUL 2025 to 07 AUG 2025

SC-3, 10 JUL 2025 to 07 AUG 2025