

BEEVILLE, TEXAS

AL-5899 (FAA)

19115

WAAS CH 53741 W30A	APP CRS 307°	Rwy Idg 4553 TDZE 262 Apt Elev 273
--	------------------------	---

RNAV (GPS) RWY 30
BEEVILLE MUNI (BEA)

RNP APCH.

T For uncompensated Baro-VNAV systems, LNAV/VNAV NA below -15°C
A (5°F) or above 54°C (130°F). Circling Rwy 18 and 36 NA at night.
 Rwy 30 helicopter visibility reduction below $\frac{3}{4}$ SM NA.

MISSED APPROACH: Climb to 2000 direct NEYIB and hold.

AWOS-3 118.675	HOUSTON CENTER 134.6 322.5	UNICOM 122.8 (CTAF) 0
--------------------------	--------------------------------------	---------------------------------

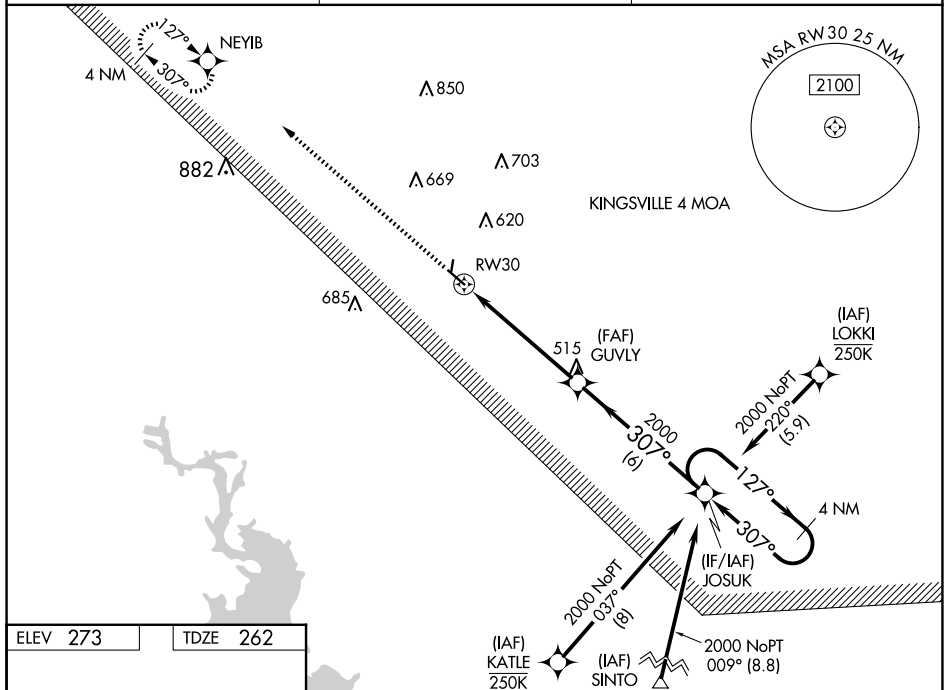


Figure 1 illustrates a 4 NM Holding Pattern for RW30. The pattern is a racetrack shape with a 4 NM width. The inbound leg is 2.4 NM, and the outbound leg is 3.0 NM. The pattern is centered on the 307° heading. The diagram also shows the 4 NM Holding Pattern for RW30, with a 127° outbound leg and a 307° inbound leg. The pattern is centered on the 307° heading. The diagram also shows the 4 NM Holding Pattern for RW30, with a 127° outbound leg and a 307° inbound leg. The pattern is centered on the 307° heading.

BEEVILLE, TEXAS
Amdt 1 24MAY18

28°22'N-97°48'W

BEEVILLE MUNI (BEA)
RNAV (GPS) RWY 30

SC-3, 10 JUL 2025 to 07 AUG 2025