

WAAS CH 49241 W12A	APP CRS 127°	Rwy Idg 4553 TDZE 268 Apt Elev 273
--	------------------------	---

RNAV (GPS) RWY 12
BEEVILLE MUNI (BEA)

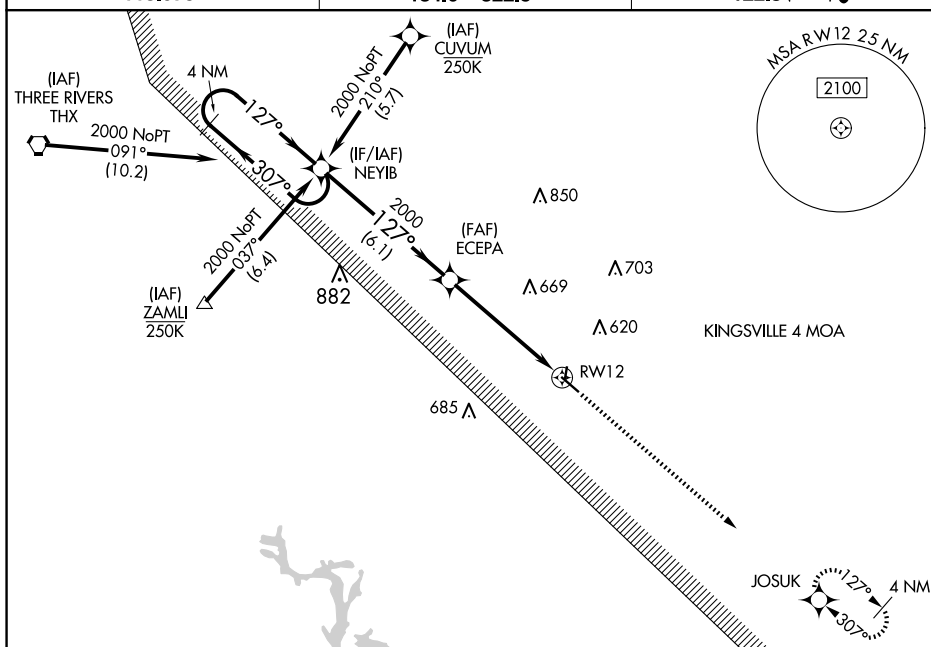
RNP APCH.

T For uncompensated Baro-VNAV systems, LNAV/VNAV NA below -15°C (5°F) or above 54°C (130°F). Circling Rwy 18 and 36 NA at night. Rwy 12 helicopter visibility reduction below ¾ SM NA.

MISSED APPROACH: Climb to 2000 direct JOSUK and hold.

AWOS-3
118.675

HOUSTON CENTER
134.6 322.5

UN|COM
122.8 (CTAF) **L**

4 NM Holding Pattern

VGSI and RNAV glidepath not coincident (VGSI Angle 3.00/TCH 20).

2000 ← 307° 127° → 2000

GP 3.00° TCH 40

NEYIB ECEPA

2000

*2.2 NM to RW12

*RNAV only.

2000

6.1 NM 3.1 NM 2.2 NM

CATEGORY	A	B	C	D
LPV DA	518-1	250 (300-1)		NA
RNAV/VNAV DA	880-1 ³ / ₄	612 (700-1 ³ / ₄)		NA
RNAV MDA	1000-1	732 (800-1)	1000-2 732 (800-2)	NA
C CIRCLING	1000-1	727 (800-1)	1000-2 727 (800-2)	NA

127° to RW12

81

0.3% UP

2251 X 60

36

4553 X 75

0.5% UP

30

MIRL Rwy 12-30