

WAAS CH 77837 W19A	APP CRS 188°	Rwy Idg 4501 TDZE 66 Apt Elev 67
--	------------------------	---

RNAV (GPS) RWY 19

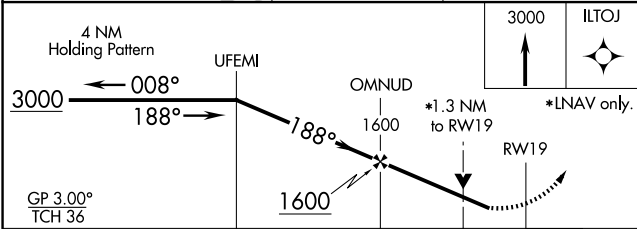
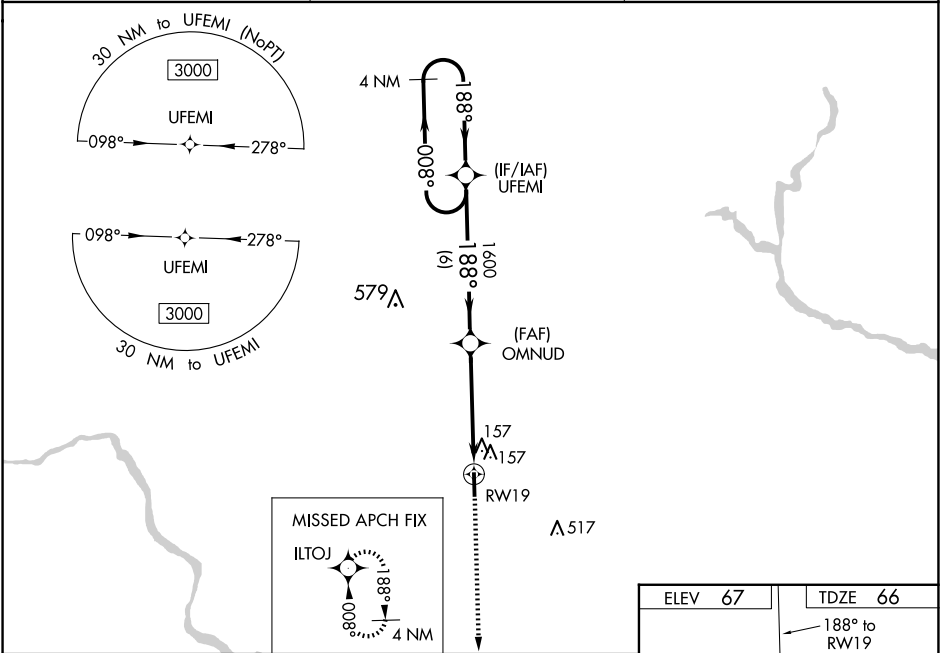
TRI-COUNTY AT HENRY JOYNER FLD (ASJ)

⚠

DME/DME RNP-0.3 NA. Night Landing: Rwy 1 NA. VDP and Baro-VNAV NA when using Franklin altimeter setting. When local altimeter setting not received, use Franklin altimeter setting and increase all DA 67 feet and all MDA 80 feet; increase LPV and LNAV/VNAV all Cats visibility ¼ mile and LNAV Cat C/D visibility ⅓ mile. For uncompensated Baro-VNAV systems, LNAV/VNAV NA below -15°C (5°F) or above 54°C (130°F). Helicopter visibility reduction below ¾ SM NA.

MISSED APPROACH: Climb to 3000 direct ILTOJ and hold, continue climb-in-hold to 3000.

AWOS-3 119.075	WASHINGTON CENTER 123.85 279.65	UNICOM 122.8 (CTAF) 0
--------------------------	---	---------------------------------



CATEGORY	A	B	C	D
LPV DA	353-1	287 (300-1)		
LNAV/VNAV DA	430-1¼	364 (400-1¼)		
LNAV MDA	520-1 454 (500-1)	520-1¾ 454 (500-1¾)		
CIRCLING	580-1 513 (600-1)	580-1½ 513 (600-1½)	820-2½ 753 (800-2½)	

