

WAAS

CH 70637

W01A

APP CRS

008°

Rwy Idg

4501

TDZE

67

Apt Elev

67

RNAV (GPS) RWY 1

TRI-COUNTY AT HENRY JOYNER FLD (ASJ)

⚠

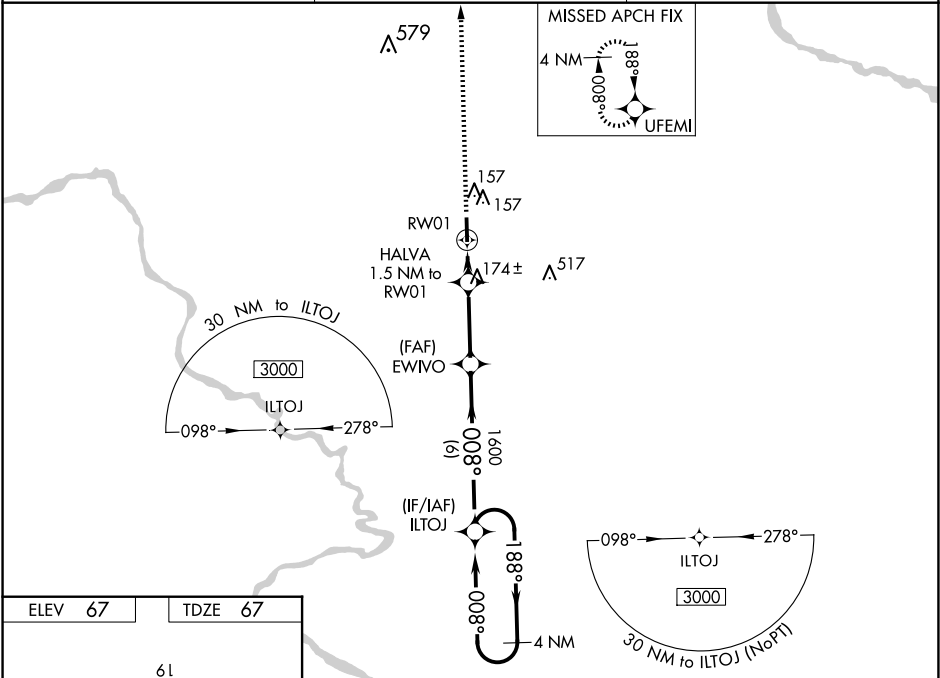
⚠

DME/DME RNP-0.3 NA. Night Landing: Rwy 1 NA. When local altimeter setting not received, use Franklin altimeter setting and increase all DA 67 feet and all MDA 80 feet; increase LPV all Cats visibility ⅓ mile, LNAV Cats C/D visibility ⅓ mile and Circling Cat D visibility ¼ mile. Baro-VNAV NA when using Franklin altimeter setting. For uncompensated Baro-VNAV systems, LNAV/VNAV NA below -15°C (5°F) or above 54°C (130°F). Helicopter visibility reduction below 1 SM NA.

MISSED APPROACH:

Climb to 3000 direct UFEMI and hold, continue climb-in-hold to 3000.

AWOS-3 119.075	WASHINGTON CENTER 123.85 279.65	UNICOM 122.8 (CTAF) 0
-------------------	------------------------------------	---------------------------------



ELEV 67

TDZE 67

61

4501 X 75

1

008° to RW01

3000

UFEMI

*LNAV only.

HALVA 1.5 NM to RW01

EWVO 1600

ILTOJ

4 NM Holding Pattern

188°

008°

3000

GP 3.17°

TCH 41

CATEGORY	A	B	C	D
LPV DA	359-1	292 (300-1)		NA
LNAV/VNAV DA	322-1	255 (300-1)		NA
LNAV MDA	440-1	373 (400-1)		
C CIRCLING	580-1	513 (600-1)	580-1½ 513 (600-1½)	820-2½ 753 (800-2½)