

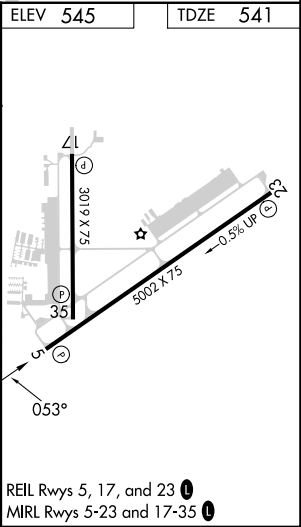
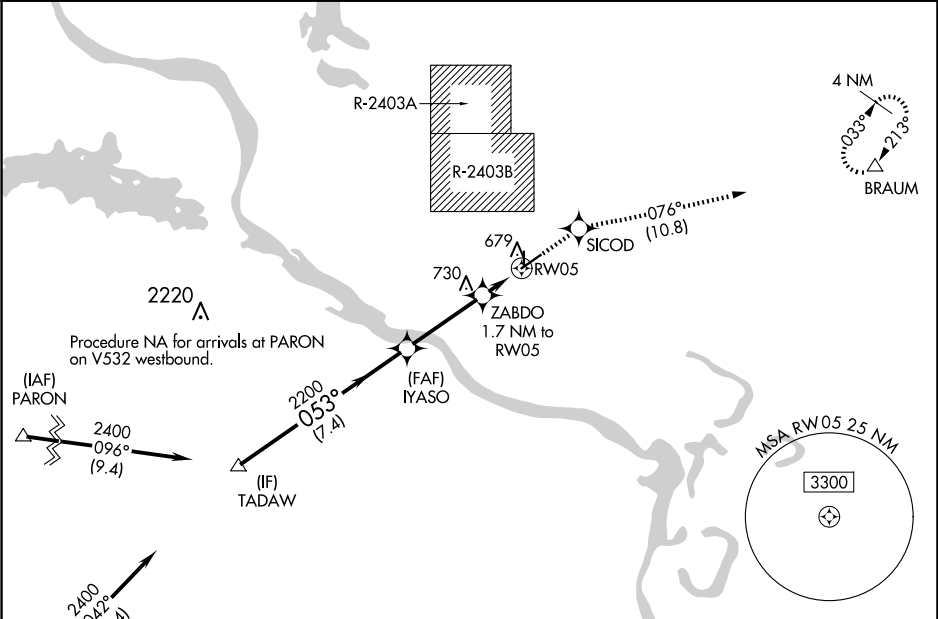
WAAS CH 58106 W05A	APP CRS 053°	Rwy Idg TDZE 541 Apt Elev 545
--	------------------------	---

RNAV (GPS) RWY 5

NORTH LITTLE ROCK MUNI (ORK)

RNP APCH.	MISSED APPROACH: Climb to 2000 direct SICOD and on track 076° to BRAUM and hold.
Circling NA for Cats B and C north of Rwy 5-23 when restricted area R-2403B in use. For uncompensated Baro-VNAV systems, LNAV/VNAV NA below -16°C or above 54°C.	

AWOS-3PT 123.775	LITTLE ROCK APP CON 119.5 306.2	CLNC DEL 121.6	UNICOM 123.075 (CTAF) 0
----------------------------	---	--------------------------	-----------------------------------



VGSI and RNAV glidepath not coincident (VGSI Angle 3.00/TCH 49).				
TADAW		2000	SICOD	BRAUM
2400		2200	tr 076°	△
GP 3.00° TCH 40		ZABDO 1.7 NM to RW05	*LNAV only.	
7.4 NM		3.3 NM	1.7 NM	
CATEGORY	A	B	C	D
LPV DA	854-7/8	313 (400-7/8)		NA
LNAV/VNAV DA	986-13/8	445 (500-13/8)		NA
LNAV MDA	1000-1	459 (500-1)	1000-13/8 459 (500-13/8)	NA
CIRCLING	1060-1	515 (600-1)	1080-11/2 535 (600-11/2)	NA