

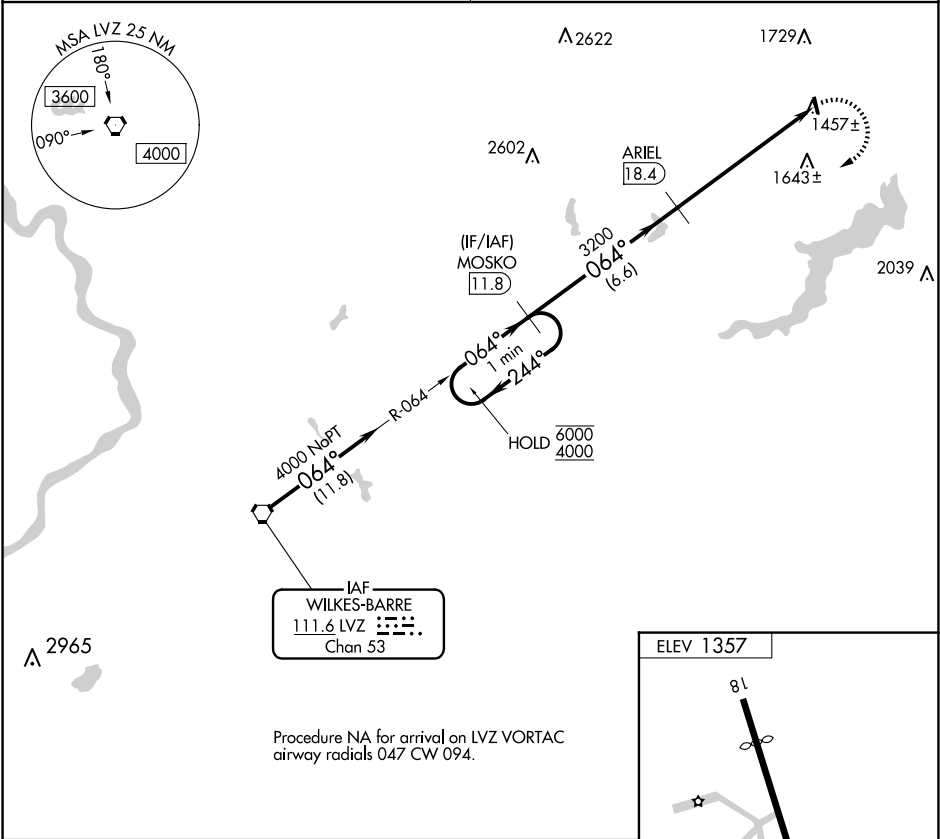
VORTAC LVZ 111.6 Chan 53	APP CRS 064°	Rwy Idg TDZE Apt Elev	N/A N/A 1357
--	------------------------	-----------------------------	---

VOR-A

CHERRY RIDGE (N30)

DME required.	MISSED APPROACH: Climbing right turn to 4000 on LVZ VORTAC R-064 to MOSKO 11.8 DME and hold.
<div><div>▼</div><div>▲ NA</div></div> <div>Procedure NA at night. Helicopter visibility reduction below 1 SM NA. Obtain local altimeter setting on CTAF; when not received, use Wilkes-Barre/Scranton altimeter setting and increase all MDAs 120 feet.</div>	

WILKES-BARRE APP CON 120.95 256.7	UNICOM 122.8 (CTAF)
---	-------------------------------



Procedure NA for arrival on LVZ VORTAC
airway radials 047 CW 094.

