

APP CRS 360°	Rwy Idg TDZE Apt Elev	N/A N/A 1357
------------------------	-----------------------------	---

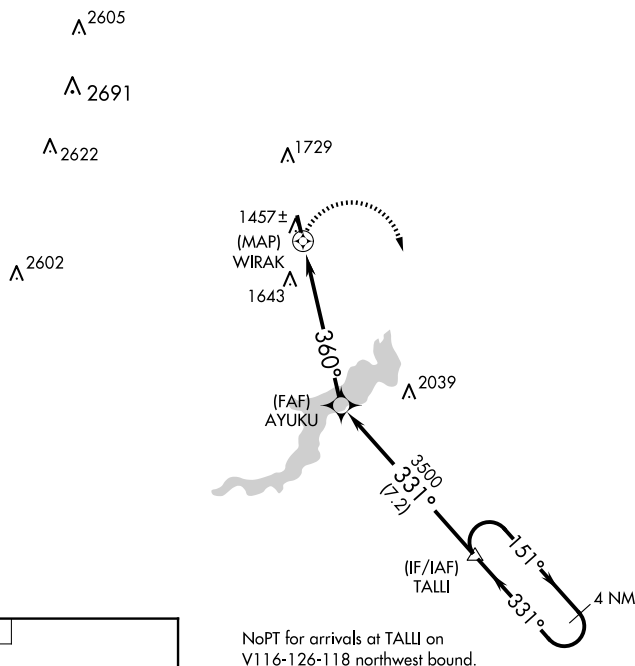
RNAV (GPS)-B
CHERRY RIDGE (N30)

T DME/DME RNP-0.3 NA. Procedure NA at night. Obtain local altimeter setting on CTAF; when not received, use Wilkes-Barre/Scranton Intl altimeter setting, and increase MDA 320 feet and Cat A visibility $\frac{1}{4}$ mile.

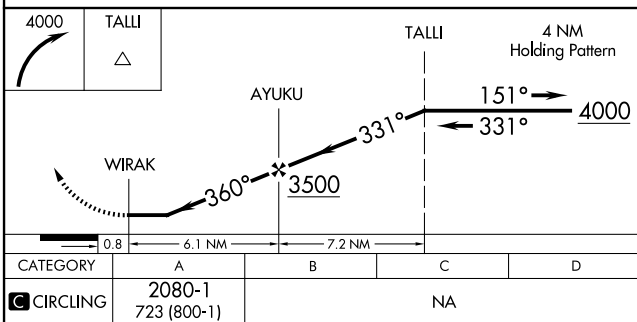
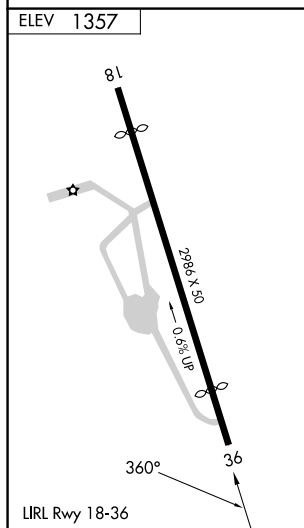
MISSED APPROACH: Climbing right turn to 4000 direct TALL and hold.

WILKES-BARRE APP CON
120.95 256.7

UNICOM
122.8 (CTAF)



NoPT for arrivals at TALL on
V116-126-118 northwest bound.



HONESDALE, PENNSYLVANIA
Orig-A 08OCT20

41°31'N-75°15'W

CHERRY RIDGE (N30)
RNAV (GPS)-B

NE-4, 10 JUL 2025 to 07 AUG 2025