

WAAS CH 72924 W02A	APP CRS 017°	Rwy Idg 5000 TDZE 361 Apt Elev 365
--	------------------------	---

RNAV (GPS) RWY 2
FITZGERALD MUNI (FZG)

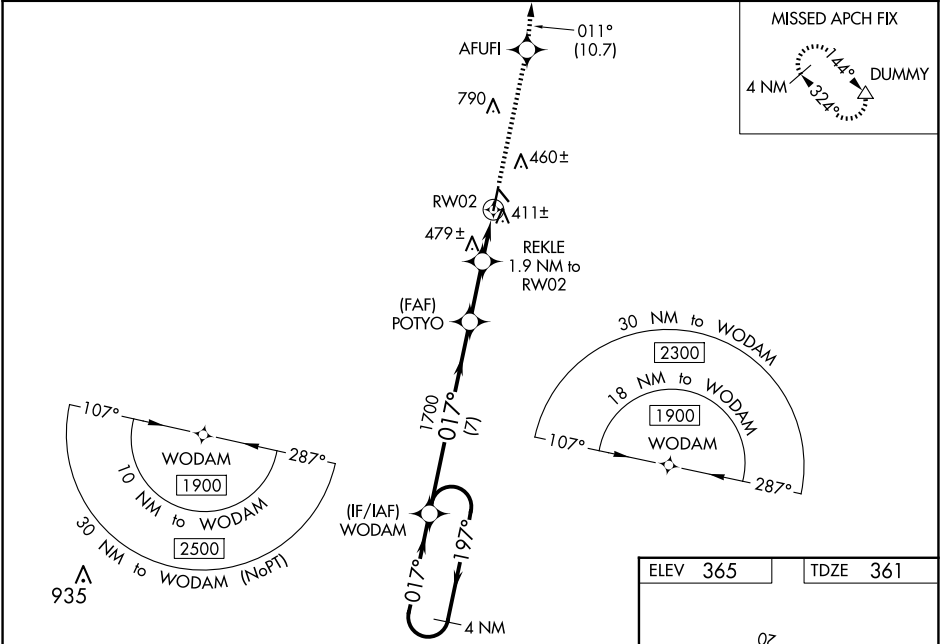
RNP APCH - GPS.

▼ Circling NA to Rwy 15 and 33. Baro-VNAV and VDP NA when using Tifton altimeter setting.
▲ For uncompensated Baro-VNAV systems, LNAV/VNAV NA below -15°C or above 54°C.
When local altimeter setting not received, use Tifton altimeter setting: increase LPV DA to 656 feet and LNAV/VNAV DA to 691 feet; increase LNAV/VNAV all Cats visibility 1/8 SM, increase all MDAs 60 feet and LNAV visibility Cats C/D 1/8 SM, and Circling Cats C/D visibility 1/4 SM. Inop table does not apply to LPV all Cats and LNAV Cats C/D. For inop ALS increase LNAV/VNAV Cats A/B visibility to 7/8 SM. For inop ALS when using Tifton altimeter setting increase LPV Cats A/B visibility to 7/8 SM and LNAV/VNAV Cats A/B visibility to 1 SM.

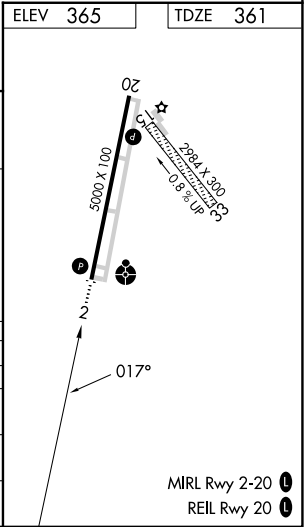


MISSED APPROACH:
Climb to 2300 direct AFUFI and on track 011° to DUMMY and hold.

AWOS-3PT 118.625	JACKSONVILLE CENTER 127.575 269.025	UNICOM 123.0 (CTAF) 1
----------------------------	---	---------------------------------



VGSI and RNAV glidepath not coincident (VGSI Angle 3.00/TCH 44).			
4 NM Holding Pattern WODAM			
1900 ← 197° → 017° → 017° → 1700 → 017° → 1000 → 017° → RW02			
GP 3.00° TCH 40			
7 NM → 2.2 NM → 0.8 NM → 1.1 NM			
CATEGORY	A	B	C
LPV DA	611-7/8 250 (300-7/8)		
LNAV/VNAV DA	646-7/8 285 (300-7/8)		
LNAV MDA	740-7/8 379 (400-7/8)		
CIRCLING	880-1 515 (600-1)		



SE-4, 10 JUL 2025 to 07 AUG 2025

SE-4, 10 JUL 2025 to 07 AUG 2025